


CONTACT US:

If you have any questions about the installation of YITAHOME products, just contact us at +1 (888) 717-8084 from Mon-Fri 8:00 AM-4:30 PM PST / Sat. 8:00 AM-12:00 PM PST or e-mail us at after-sale.cs@hotmail.com

Alternative method to contact us (amazon.com orders only)

1. Log into your Amazon account
2. Go to "Your Orders" and find the purchase
3. Click on "Contact Seller"

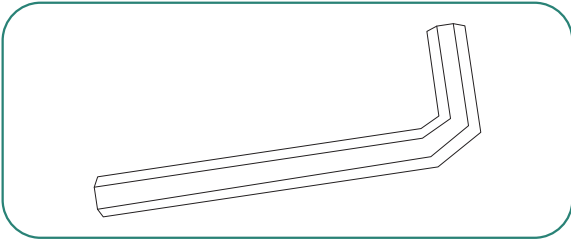
METAL BED FRAME WITH HEADBOARD (TWIN)

- 
1. Two or more people are required for the assembly.

2. To avoid squeaking, fix the bolts tight until they can no longer turn.

An electric drill is recommended for the assembly.

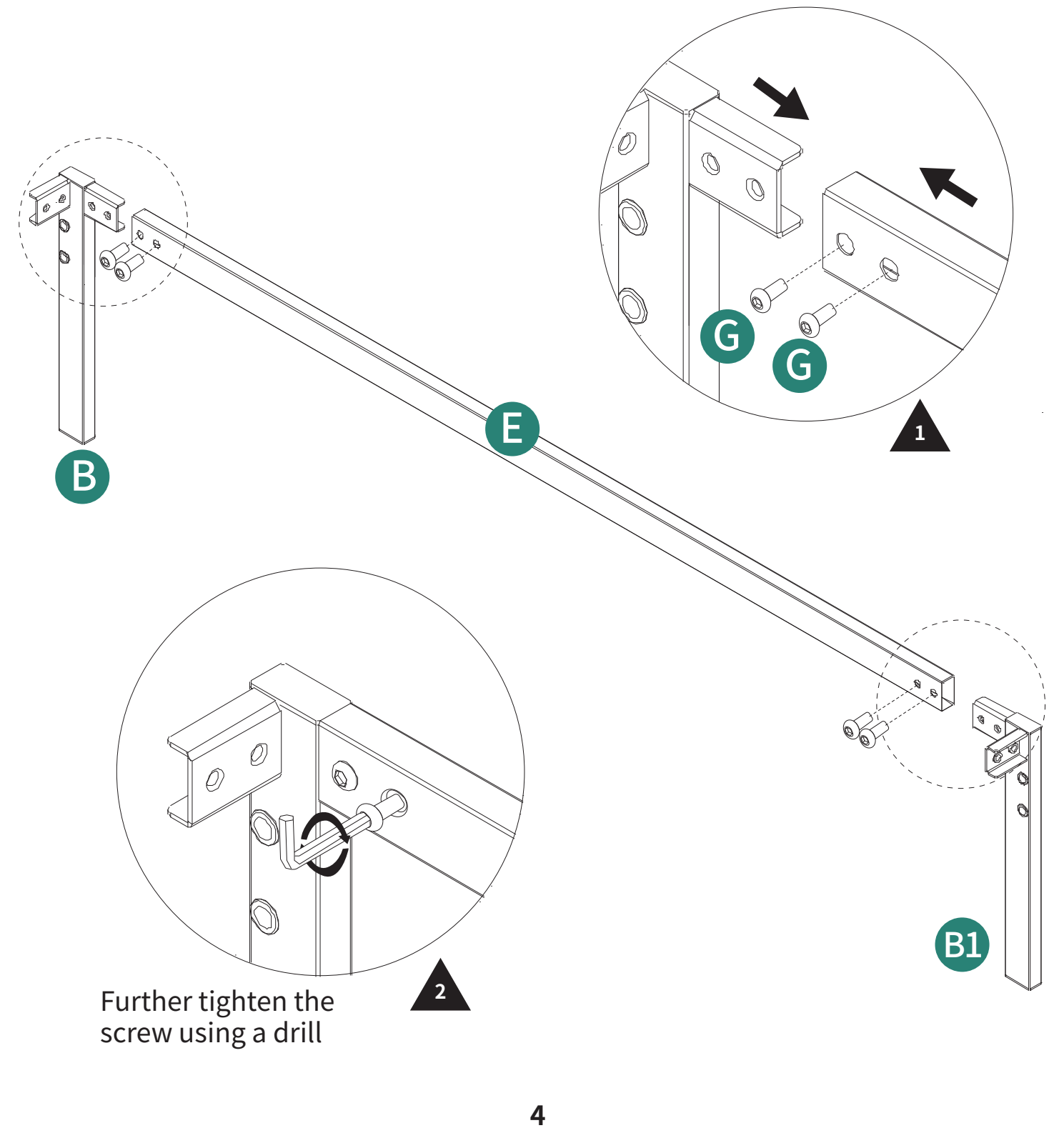
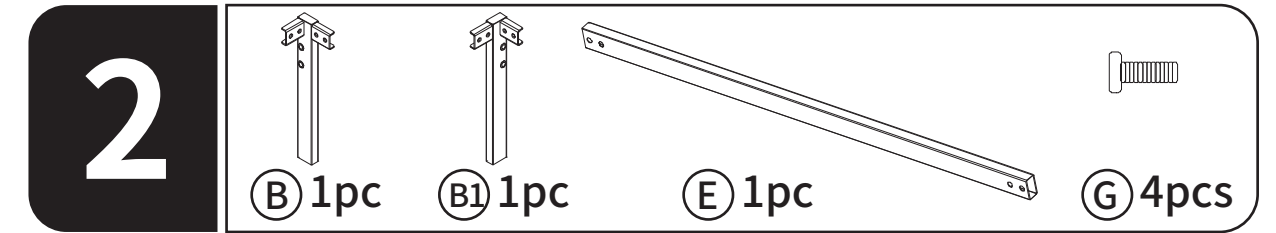
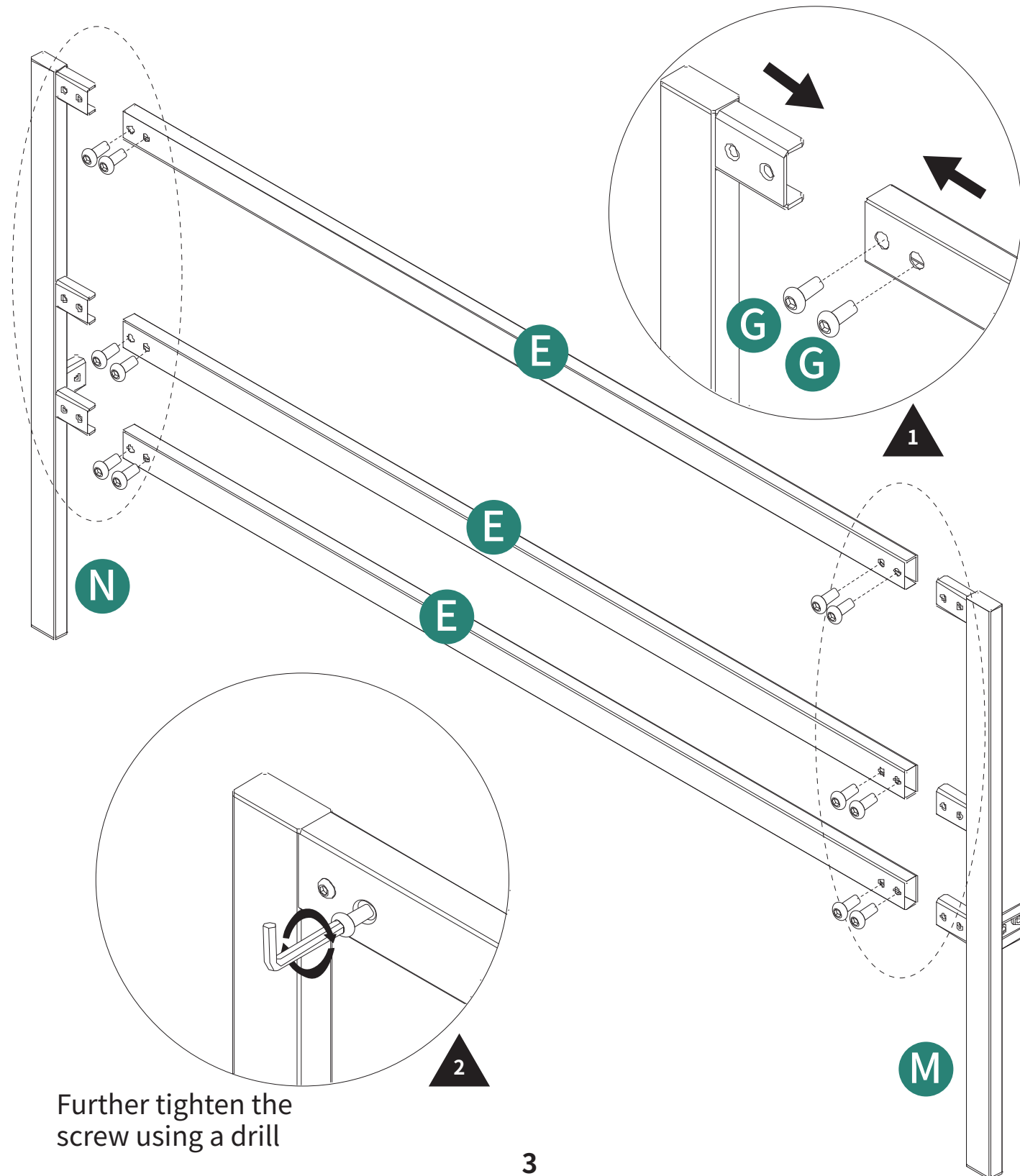
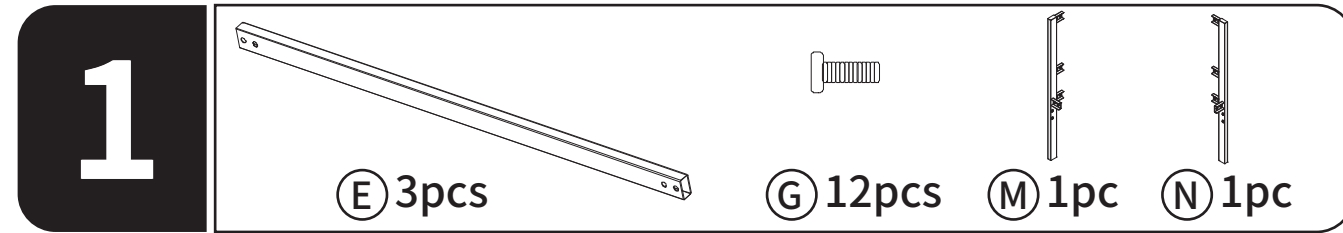
Tools Required For Assembly



Item no.	Reference Image	Qty.
A		X 1
A1		X 1
B		X 1
B1		X 1

Item no.	Reference Image	Qty.
C		X 2
D		X 1
E		X 4
F		X 1
G		X 40
H		X 1
I		X 10

Item no.	Reference Image	Qty.	Item no.	Reference Image	Qty.
M		X 1	N		X 1



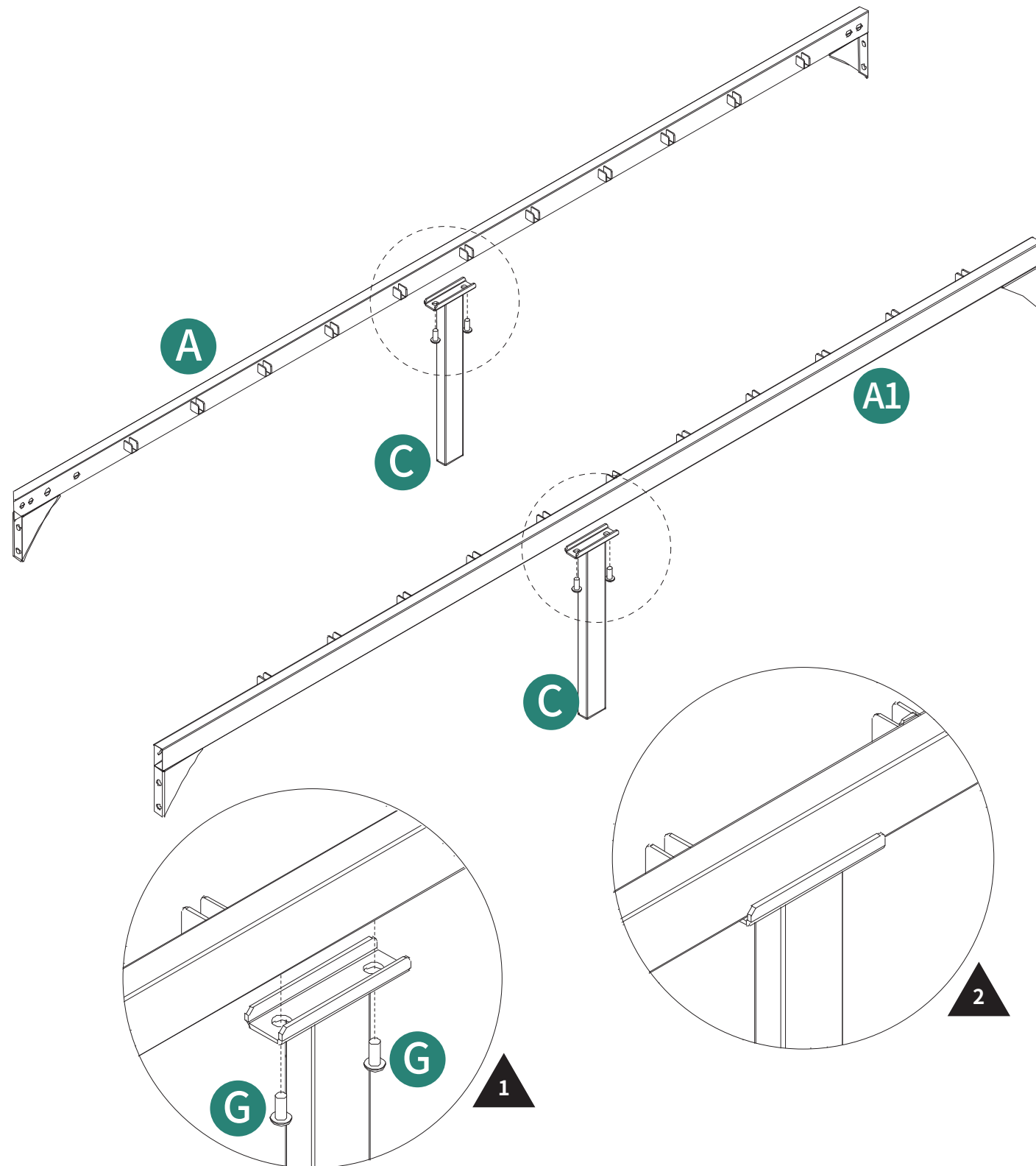
3

Ⓐ 1pc

Ⓐ1 1pc

Ⓒ 2pcs

Ⓖ 4pcs

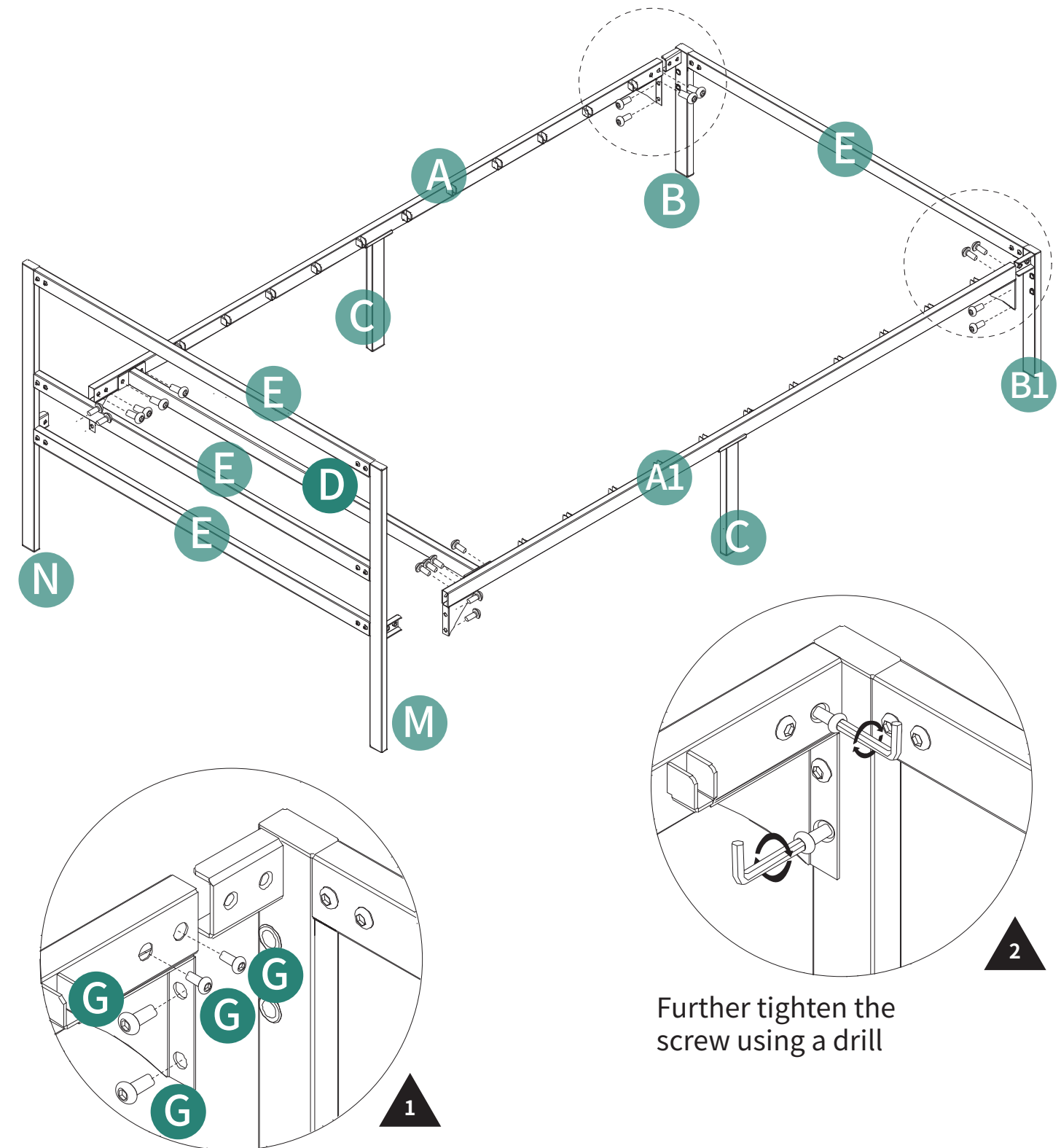


5

4

Ⓓ 1pc

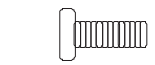
Ⓖ 12pcs



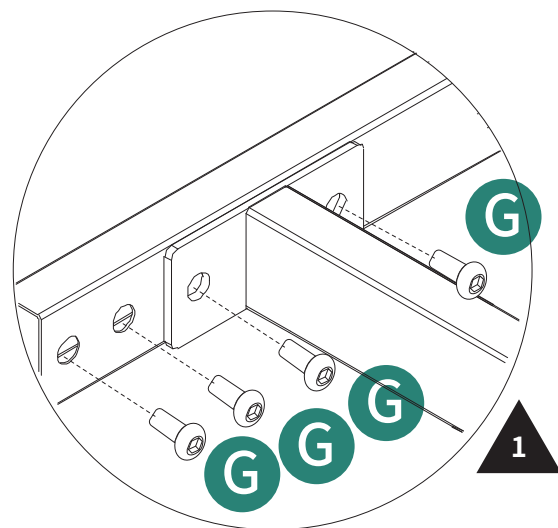
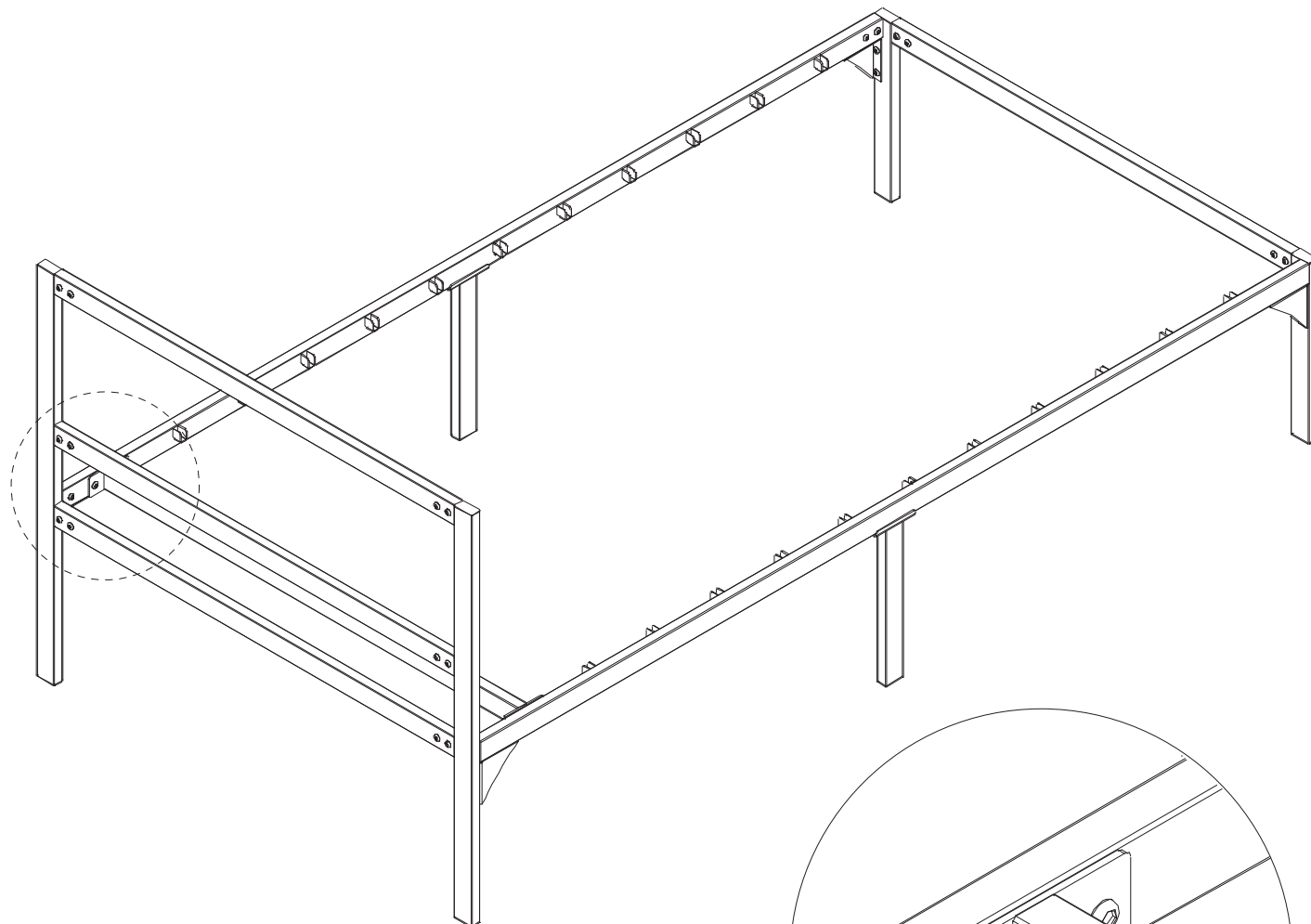
6

Further tighten the screw using a drill

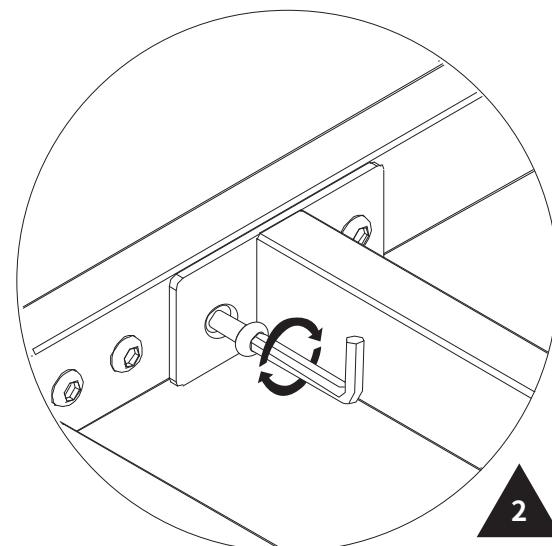
5



Ⓔ 8pcs



7

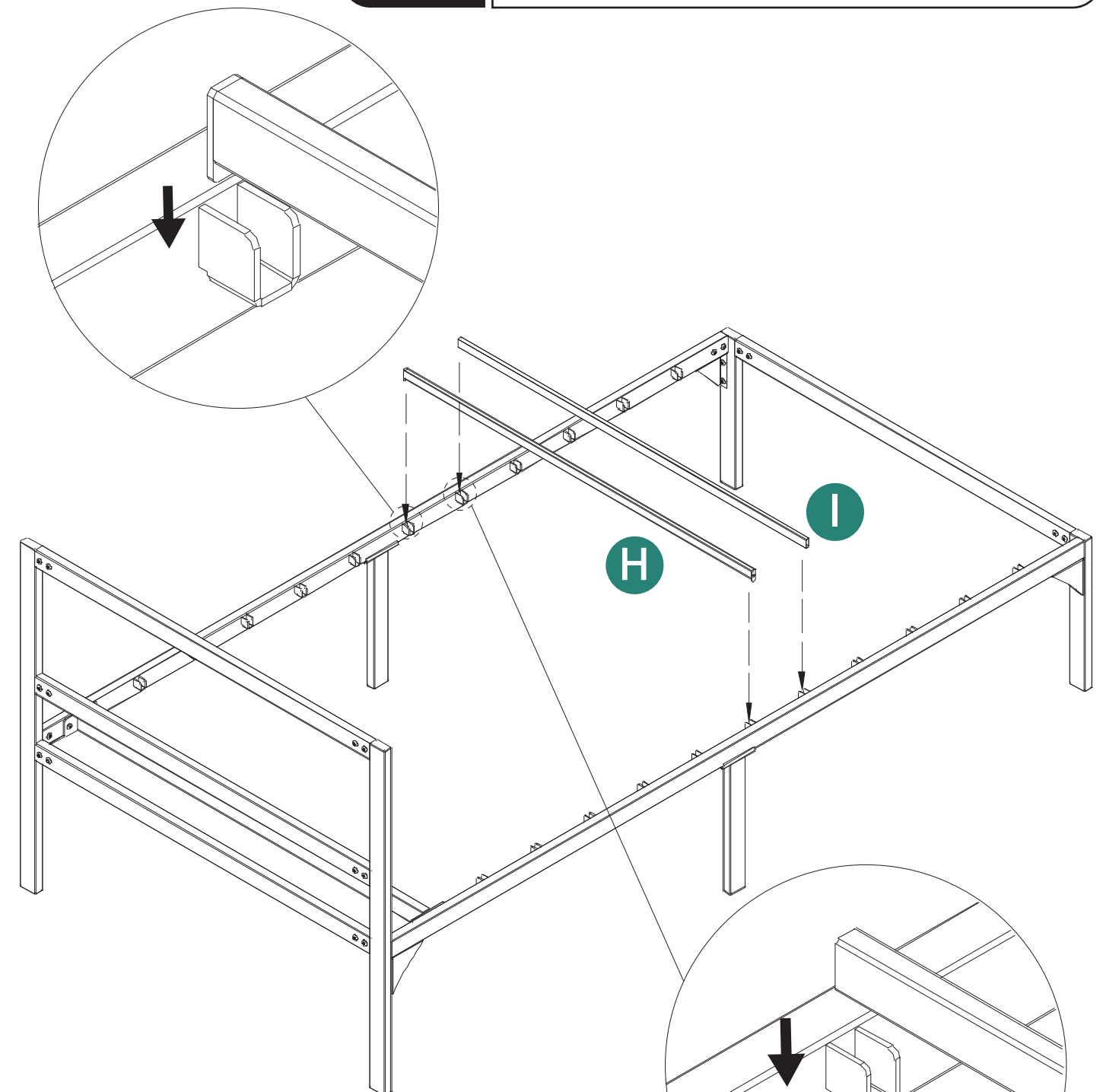
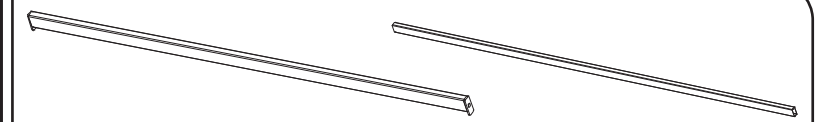


Further tighten the screw using a drill

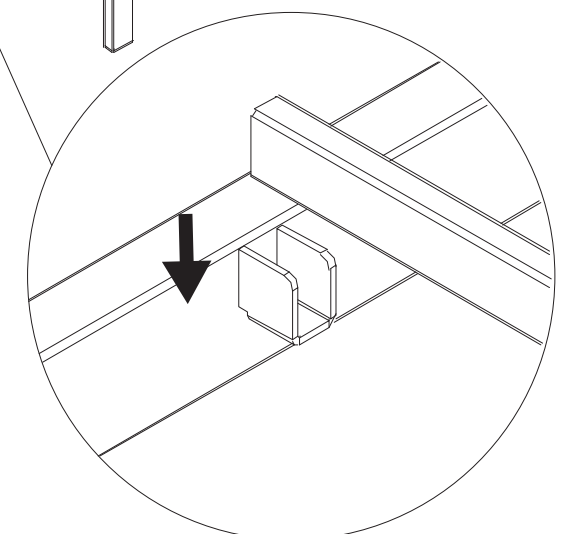
6

Ⓕ 1 pc

Ⓖ 10 pcs

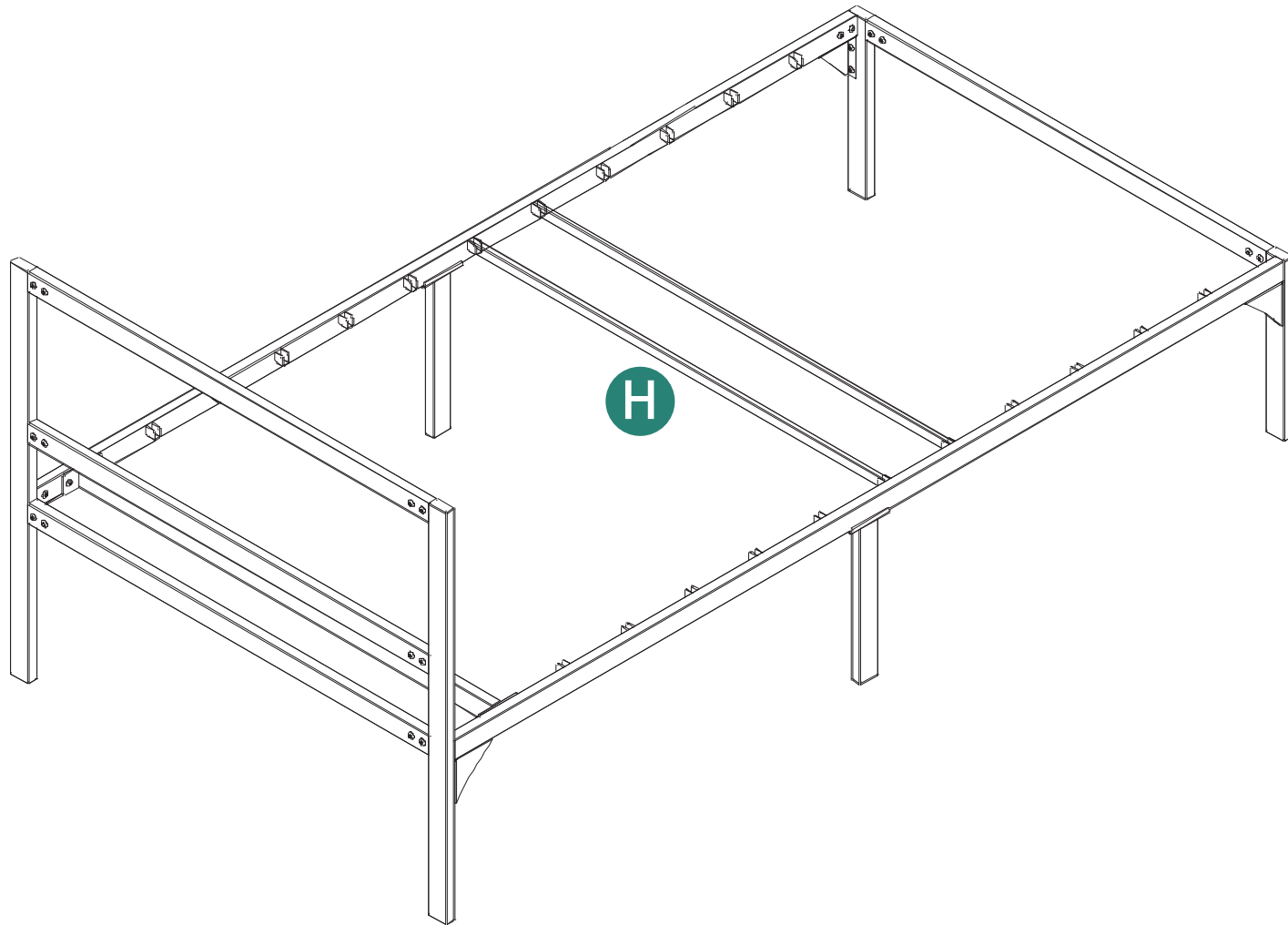


8

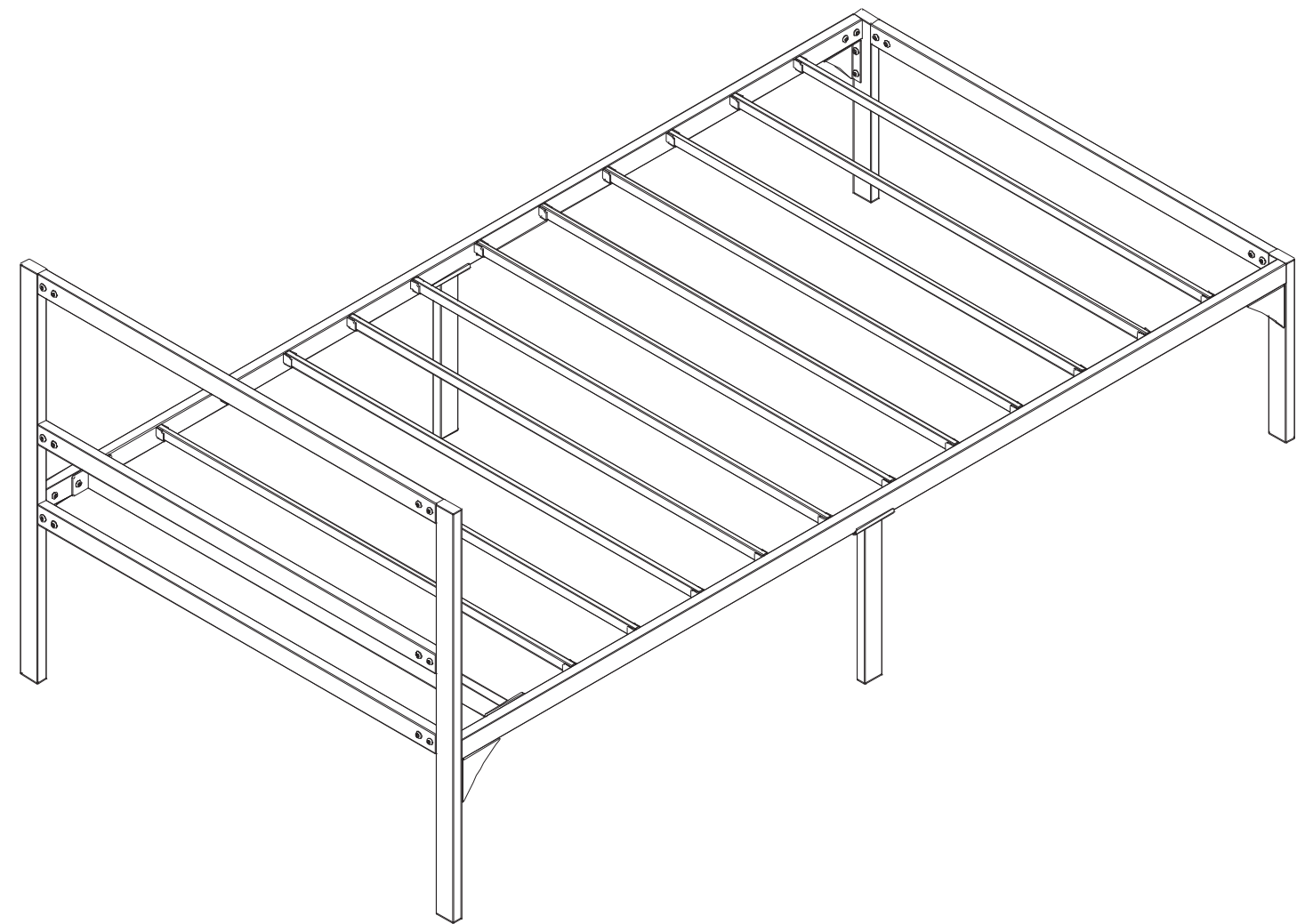


7

H-type steel slats can be installed into any side groove and provide solid support for the bed frame.



8



Complete Installation