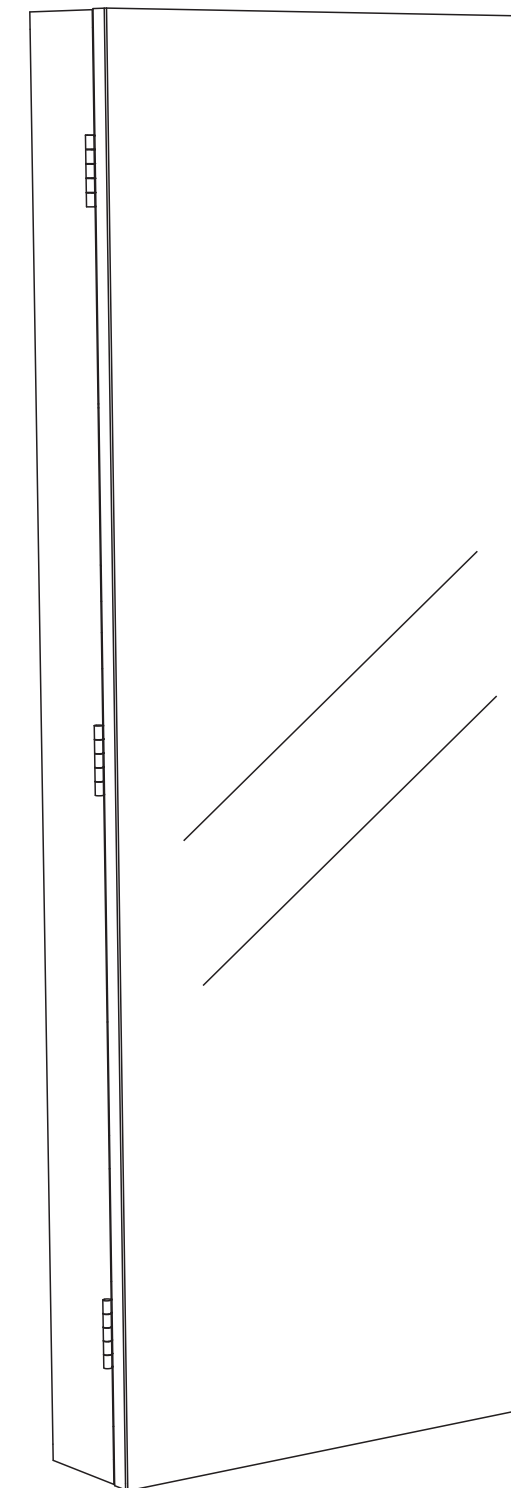


FTLFJC-0000  
FTLFJC-0001



**FRAMED MIRROR**



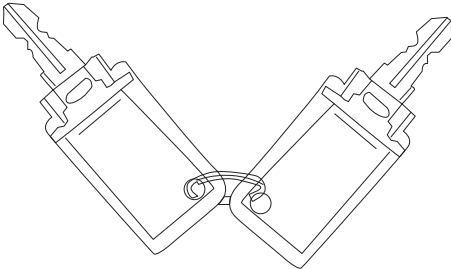
### CONTACT US:


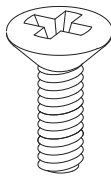
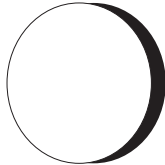
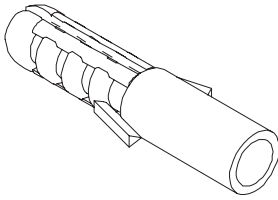
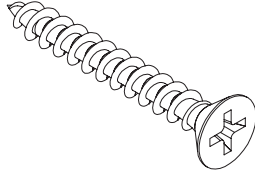
If you have any questions about the installation of YITAHOME products, just contact us at +1 (888) 717-8084 from Mon-Fri 8:00 AM-4:30 PM PST / Sat. 8:00 AM-12:00 PM PST or e-mail us at [after-sale.cs@hotmail.com](mailto:after-sale.cs@hotmail.com)

Alternative method to contact us (amazon.com orders only)

- 1.Log into your Amazon account
- 2.Go to "Your Orders" and find the purchase
- 3.Click on "Contact Seller"

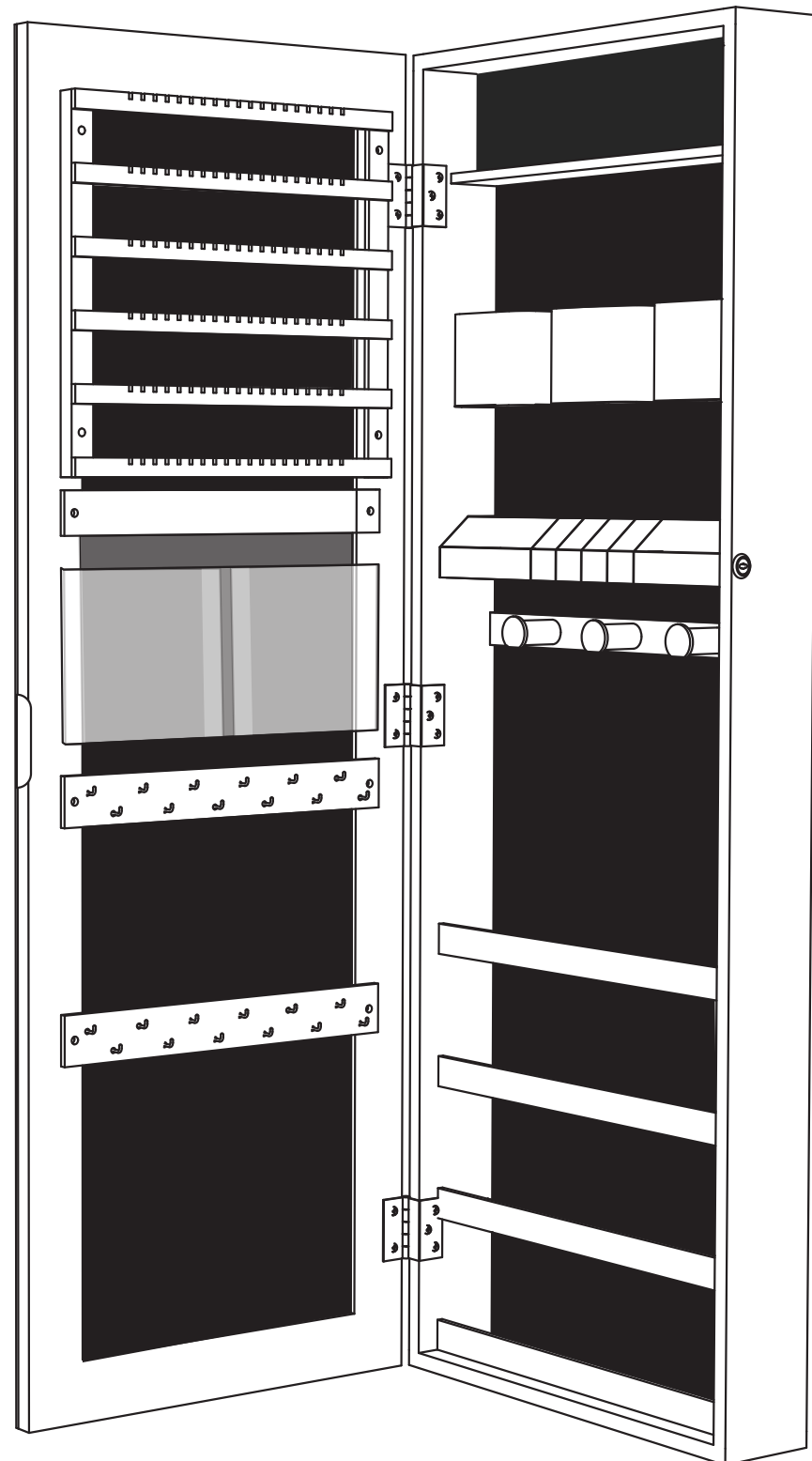
⚠ The framed mirror can be easily mounted to a door or a wall.  
Keep away from children during installation. Children should not climb or hang on this framed mirror.  
Keep the product door closed when not in use.  
Open and close the product door gently to prevent the contents from falling.  
An electric drill, a hammer, a Phillips screwdriver, and a tape measure are required for mounting the framed mirror.

Item no.	Reference Image	Qty.
1		X1
2		X1
3		X1

Mounted to a door		
Item no.	Reference Image	Qty.
4		X2
5	 M6 X 16MM	X4
6	 15 X 2MM	X4
Mounted to a wall		
Item no.	Reference Image	Qty.
7	 Φ8mm	X2
8	 M4 X 45MM	X2

### LAYOUTN

1



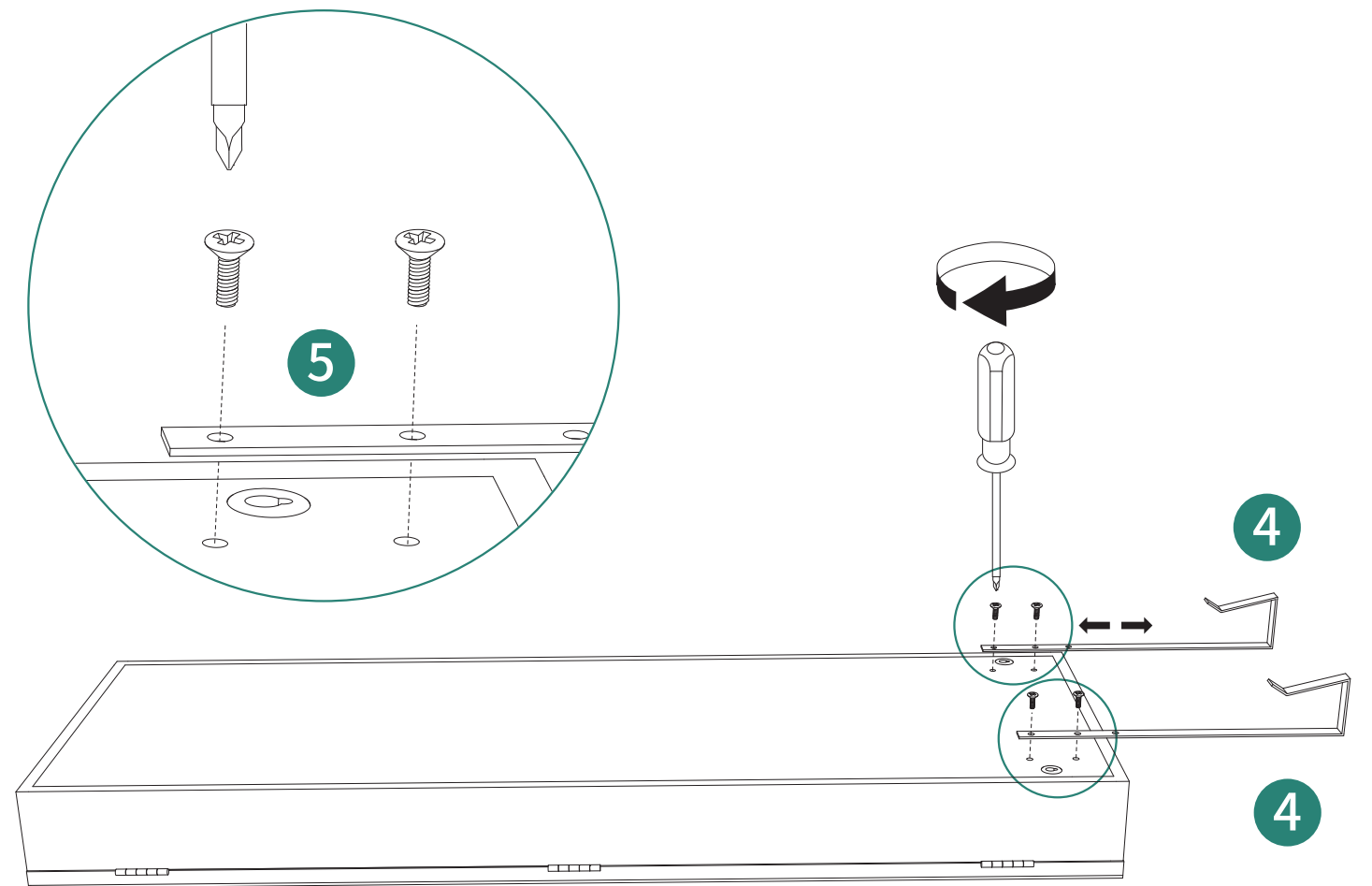
3

### Option One: Mounted to a door

1

④ 2pcs

⑤ 4pcs

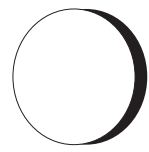


4

2

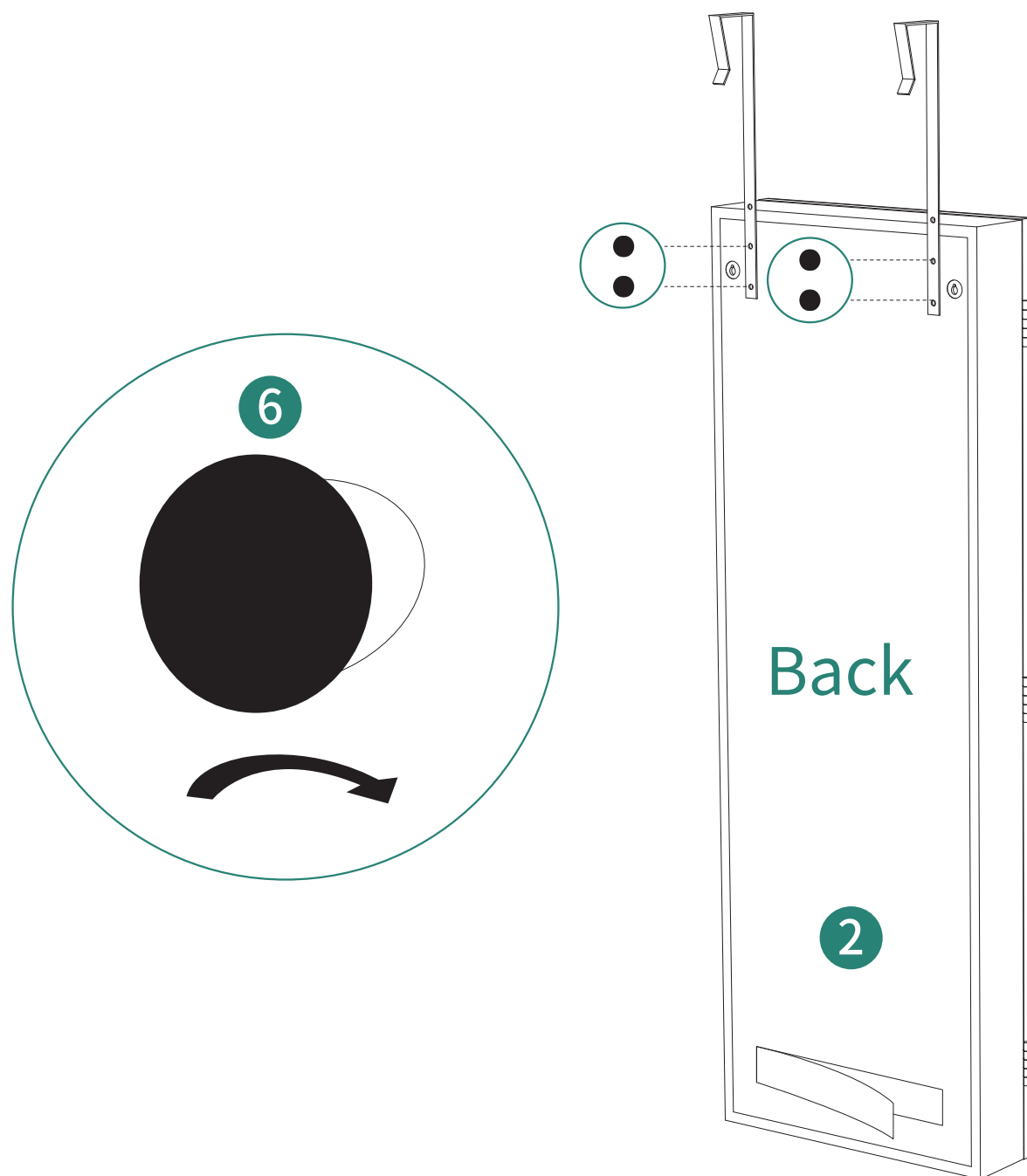


②1pc



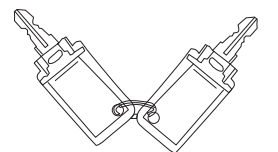
⑥4pcs

Double-sided tape is used to prevent the product from swaying.

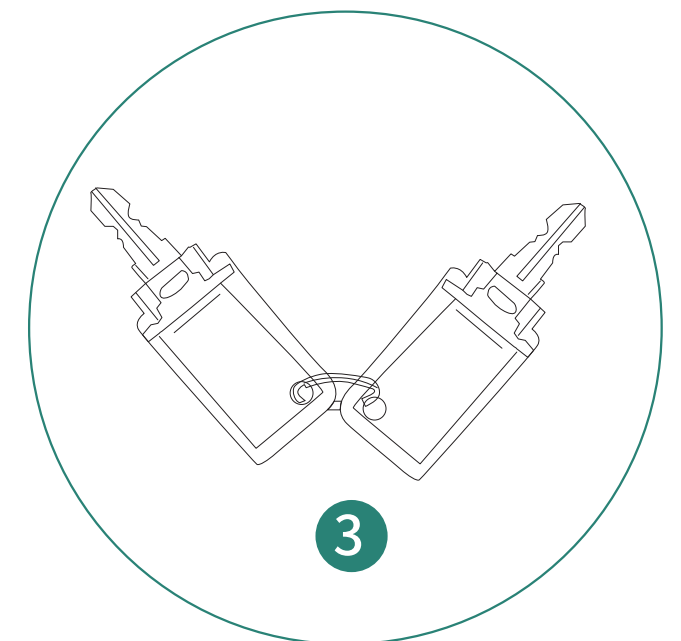
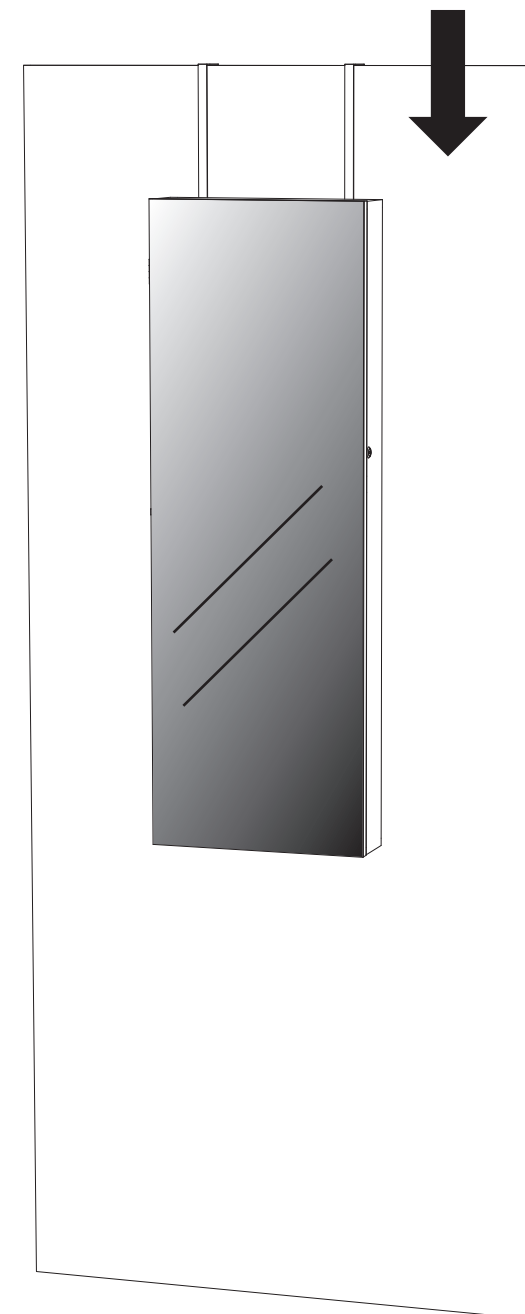


5

3



③1pc



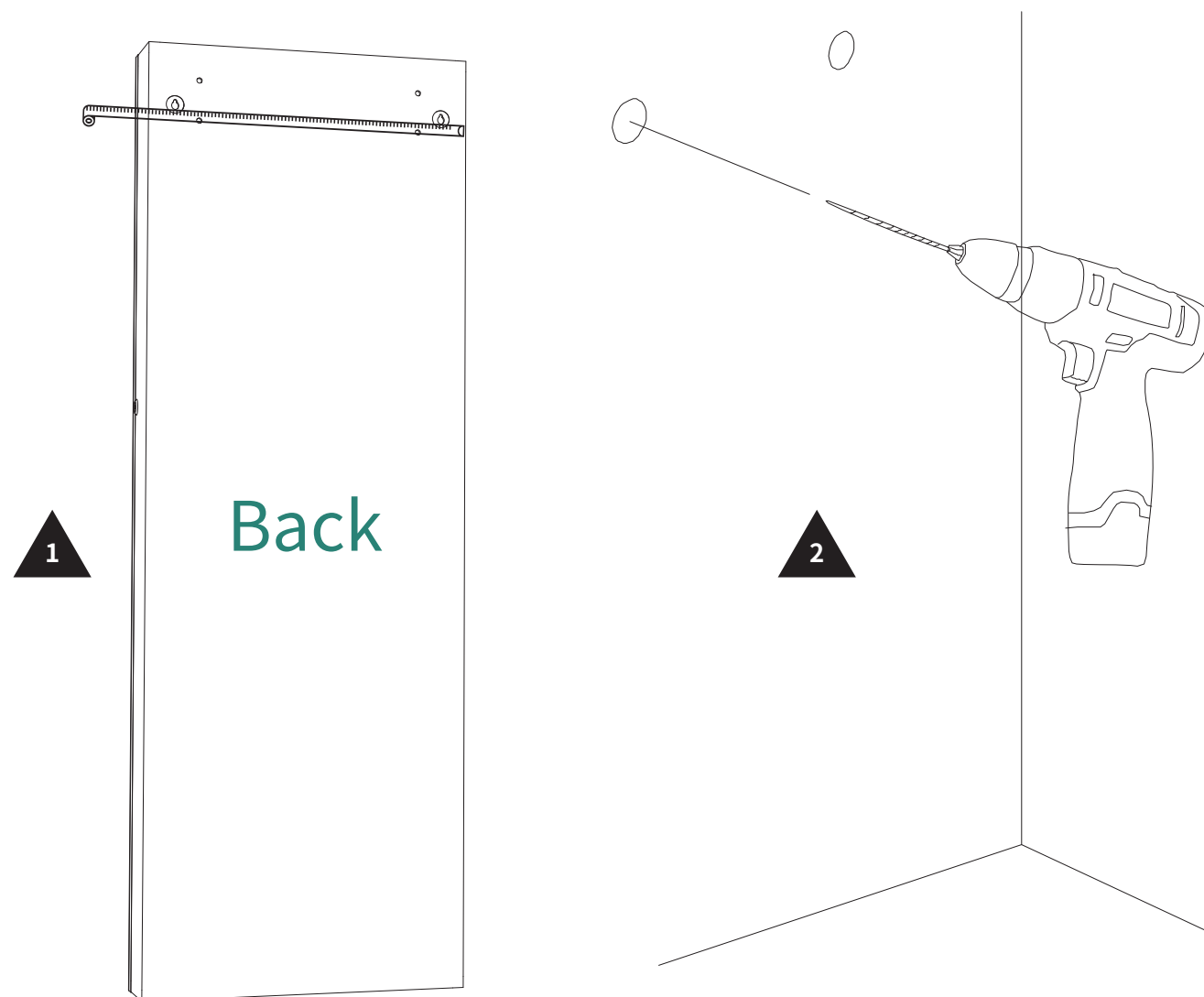
Installation Completed

6

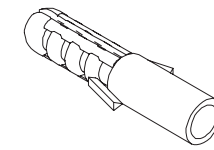
### Option Two: Mounted to a wall

# 1

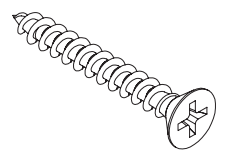
Measure the distance between the mounting holes on the back of the product and drill correlating holes in the wall.



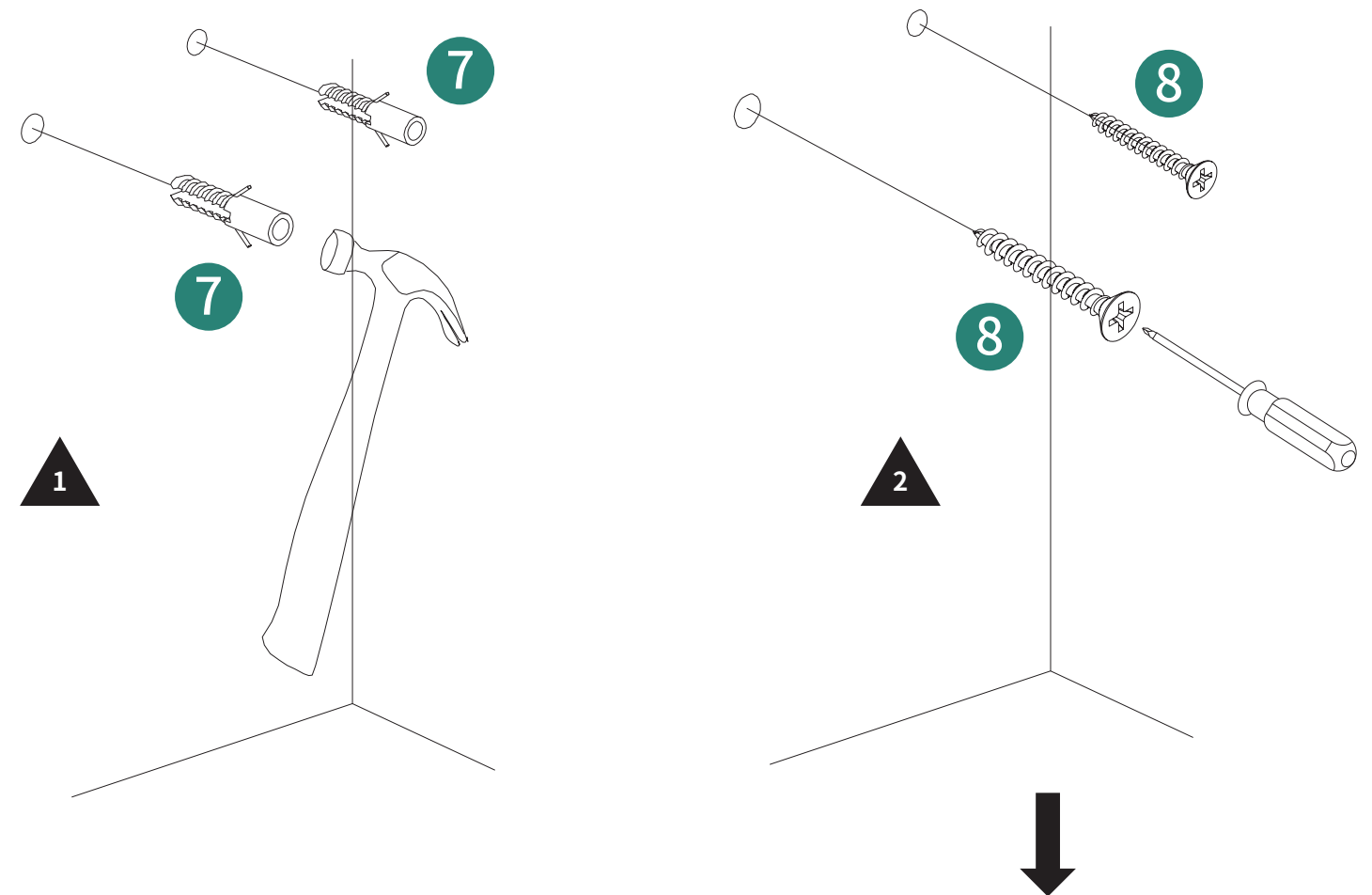
# 2



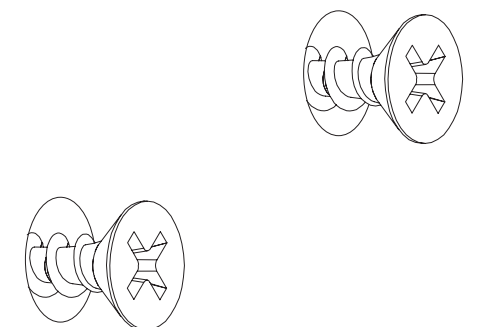
⑦ 2pcs

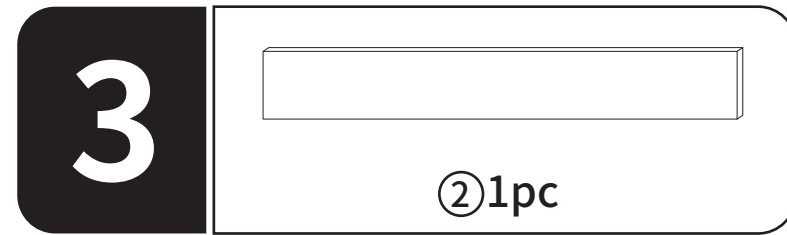


⑧ 2pcs

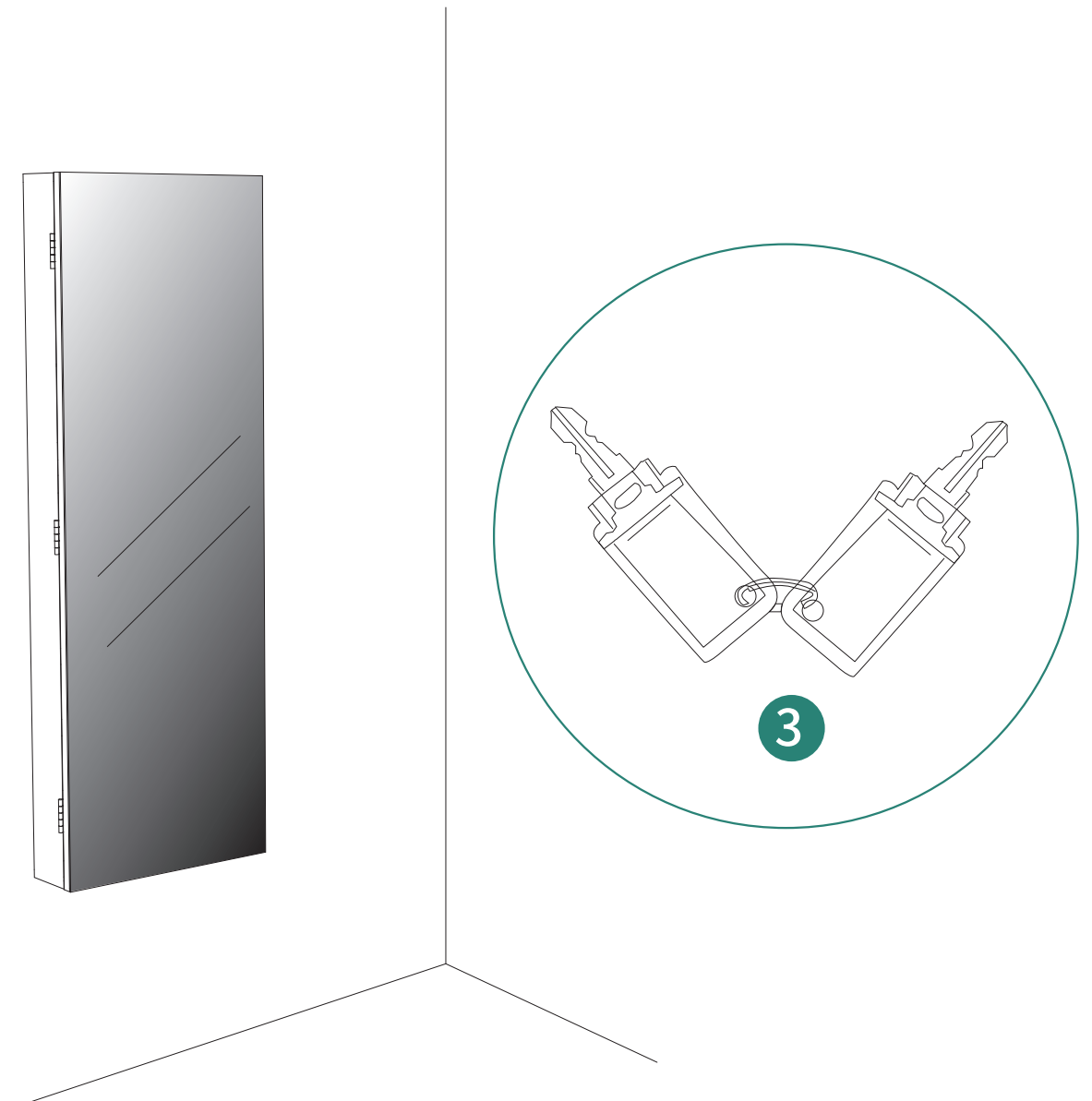
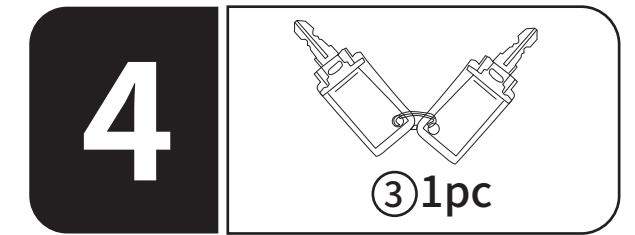
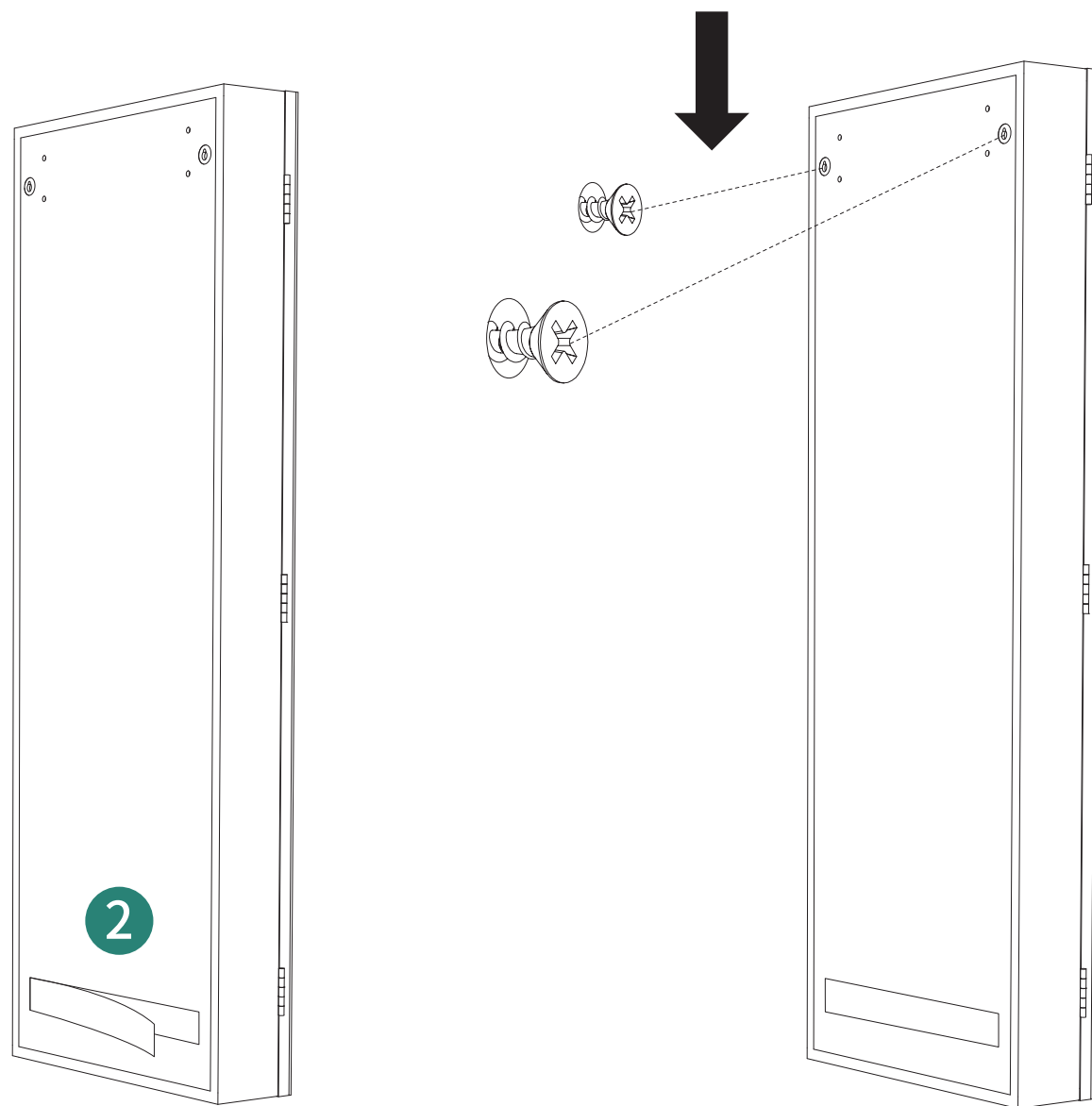


**Note:** Do not screw the mounting screws all the way, enough screw should be left for hanging the framed mirror.





Double-sided tape is used to prevent the product from swaying.



Installation Completed