



# USER MANUAL

## Kitchen Faucet

Please refer to the contents of manual prior to installtion.



### CONTACT US:

If you have any questions about the installation of YITAHOME products, just contact us from Monday to Friday 8:00 AM - 4:30 PM PST, and Saturday 8:00 AM - 12:00 PM PST.

☎ : 888-717-8084

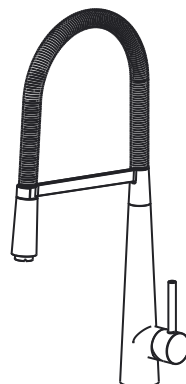
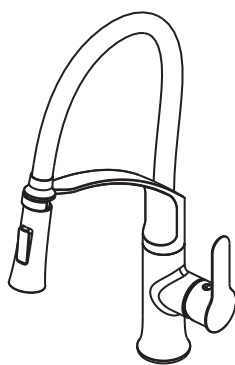
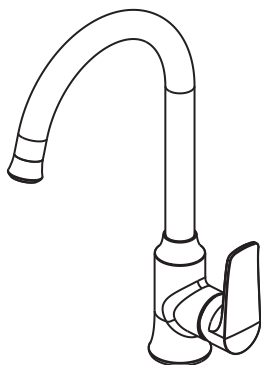
✉ : [after-sale.cs@hotmail.com](mailto:after-sale.cs@hotmail.com)

Alternative method to contact us (amazon.com orders only)

1. Log into your Amazon account.
2. Go to "Your Orders" and find the purchase order.
3. Click on "Contact Seller".

Thank you for choosing our product. Please read and follow all safety and operating instructions listed in this manual prior to use, and keep the manual for future reference. Special attention should be paid to safety precautions.

Note: Our company reserves the right to improve the product and the instructions contained therein are subject to change without notice. Product appearance may vary based on the manufacturing material.



### Kitchen Faucets

#### Product Specifications:

Brand	YITAHOME
Material	Brass/Stainless Steel/Zinc Alloy
Finishing	Chromeplated
Handle Material	Zinc Alloy
Installation Method	Single/Three Holes
Leakproof	100% No Leakage
Water Outlet Mode	Stream
QTY	1 SET/CTN

## Product Installation Manual

### Installation Conditions

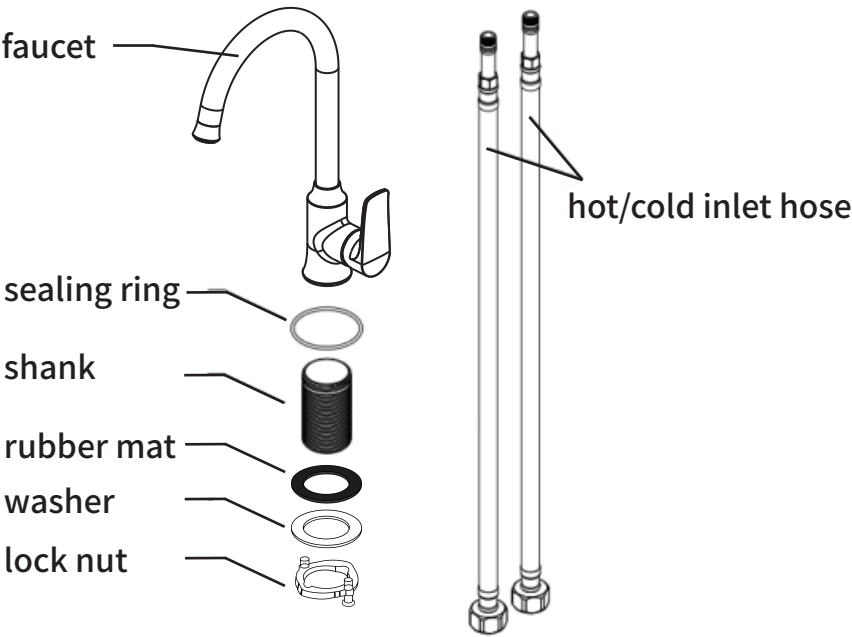
- a. Nominal pressure:1.0Mpa
- b. Work pressure:0.05Mpa-1.0Mpa
- c. Medium: drinking water, tap water
- d. Executive standard:GB18145-2014
- e. Flow (Q) : under the 0.1 MPa dynamic pressure  
 $3.0 \leq Q \leq 59.0$ (L/min)

## Installation Instructions:

1. The faucet' s main body has been factory-tested and adjusted.  
Do not try to disassemble by yourself;
2. Before installing the water nozzle, eliminate plumbing clogs and any sludge in the pre-embedded water pipe. This will prevent blockage to the water nozzle and impact water discharge;
3. After installation, confirm the joints are tightly secured so that no leaks occur;
4. The size of the table mounting hole is suitable for product installation  $\varnothing 33\text{mm}-\varnothing 35\text{mm}$ ;
5. When installing and using the water nozzle, use normal torque so that the handle, screw, and other parts don' t break down;
6. During use, release cold water first then switch to hot water so that the temperature can adjust and to avoid burns; water temperature adjust based on red and blue signs - red for hot water and blue for cold water;
7. It's normal for the two-speed shower head to shift abnormally under the low,1 kg pressure. Please pressurize by yourself;
8. Plating products such as faucets should be protected from cement, lime slurry, sand, etc. which may damage the surface.  
Clean within 30 minutes.



Installation Method



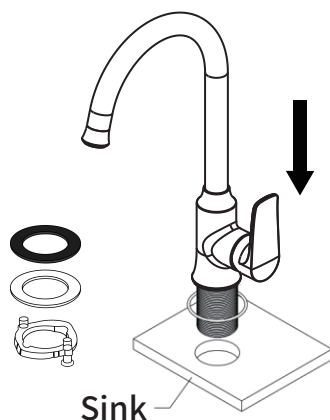
Component Parts

Faucet	x1
Sealing Ring	x1
Shank	x1
Rubber Mat	x1
Washer	x1
Lock Nut	x1
Hot/Cold Inlet Hose	x2

**A**

### Step 1

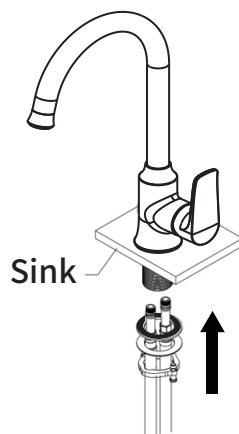
Remove the table lock components (rubber mat, washer, lock nut). Then insert the faucet into the sink hole.



**B**

### Step 2

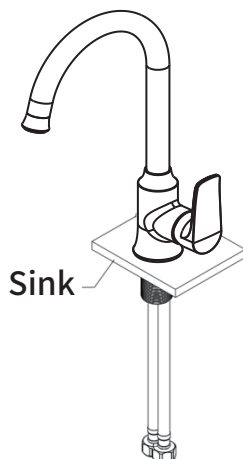
Put table lock component (rubber mat, washer, lock nut) through main faucet's water inlet hose and tighten them on the edge. Secure the two locking screws with screwdriver.



**C**

### Step 3

After the faucet is installed, connect the inlet angle valve according to "Step 4"

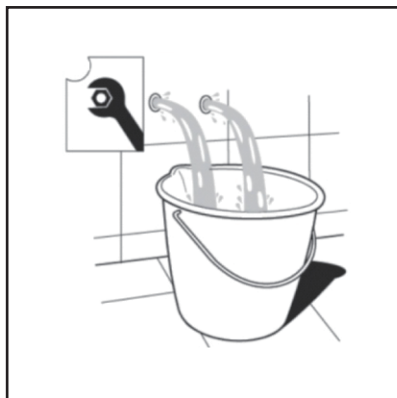


## D

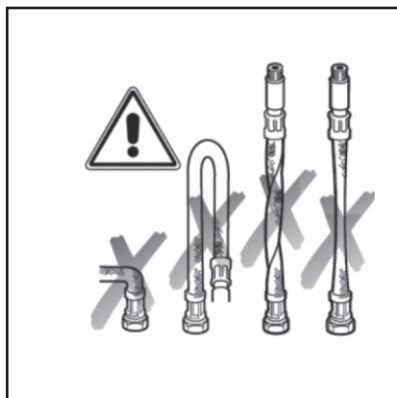
## Step 4

**CAUTION:** Prior to connecting the cold/ hot inlet hose to corner valve, you must first:

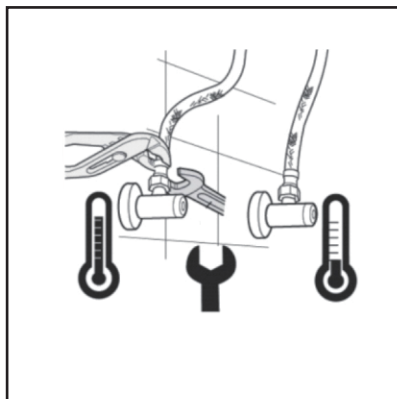
- a. Drain any dirty water in the pipeline before the nozzle connects to the water inlet pipe. Then turn off the water.



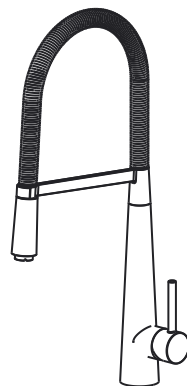
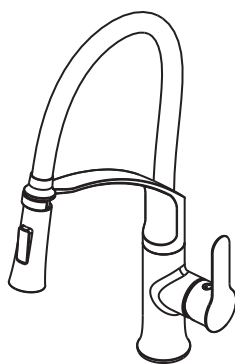
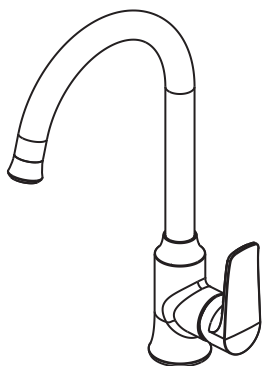
- b. When the inlet hose is connected, it cannot be bent, twisted, or stretched. Otherwise, water leakage or even tube explosion may occur.



c. When the inlet hose is connected to the angle valve, use two wrenches – one for the water inlet hose and another to prevent the hose from twisting when nut rotates. The hot and cold inlet pipes connect to the inlet angle valve accordingly.



### Applicable:



## Cleaning & Maintenance

**To keep the faucet clean and shiny, please clean it regularly:**

1. Rinse with pure water and dry the faucet with a soft cloth.
2. Do not use detergents, nylon brooms, emery cloth, sandpaper, or coarse particles such as decontamination or polishing powder.
3. Never use any acidic detergent, rough detergent, or soap.
4. After using the product for a period of time, the water flow may diminish and become scattered. If this issue occurs, remove and clean the aerator, then reattach it.
5. When the ambient temperature is less than 0 degrees Celsius, please take measures to protect appliances such as water nozzles.
6. When not in use, please close the main inlet valve to prevent unnecessary loss.

## Maintenance Instructions

1. Use clean water and soft cloth to eliminate surface dirt and scale film as much as possible.
2. Use one of the following cleaning agents to remove surface dirt and scale film,
  - a. mild liquid detergent
  - b. A colorless glass cleaner and a powdered, completely soluble detergent with no grinding effects
  - c. A polishing solution that does not contain abrasive elements.
3. After the cleaning is completed, wash away all traces of the cleaning agent with water, then immediately wipe with a soft cotton cloth.
4. Use cloth to wipe the faucet with engine oil or car wax.

Thank you for reading!

If you encounter any issues when installing Yitahome's Kitchen Faucet, e-mail us at [after-sale.cs@hotmail.com](mailto:after-sale.cs@hotmail.com).



Pure & Easy