



USER MANUAL

Touch on Kitchen Faucet

Please refer to the contents of manual prior to installtion.



CONTACT US:

If you have any questions about the installation of YITAHOME products, just contact us from Monday to Friday 8:00 AM - 4:30 PM PST, and Saturday 8:00 AM - 12:00 PM PST.

☎ : 888-717-8084

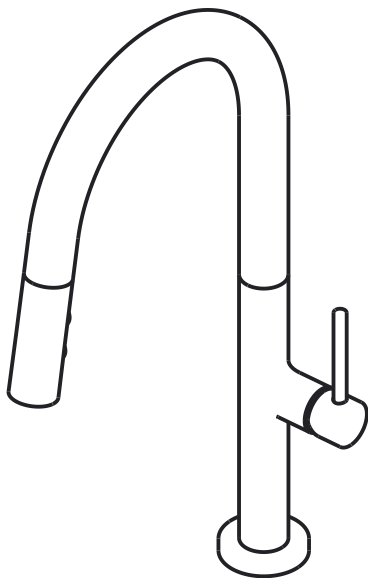
✉ : after-sale.cs@hotmail.com

Alternative method to contact us (amazon.com orders only)

1. Log into your Amazon account.
2. Go to "Your Orders" and find the purchase order.
3. Click on "Contact Seller".

Thank you for choosing our product. Please read and follow all safety and operating instructions listed in this manual prior to use, and keep the manual for future reference. Special attention should be paid to safety precautions.

Note: Our company reserves the right to improve the product and the instructions contained therein are subject to change without notice. Product appearance may vary based on the manufacturing material.



Touch on Kitchen Faucet

Product Specification:

Brand	YITAHOME
Material	Brass/Stainless Steel
Finishing	Matte Black/Chrome Plating
Handle material	Brass
Installation Method	Single/Three Holes
Leakproof	100% No Leakage
Water Outlet Mode	Stream & Spray
QTY	1 SET/CTN

Product Features

- a.Touch Function: Touch the faucet to activate and deactivate water flow.
- b.Safety Protection: The system will automatically deactivate the flow when the time limit is reached (180 seconds).
- c.Separated Design: The control system and faucet body are separated for more convenient installation and maintenance.
- d.Low Power Consumption: Battery powered, 4AA alkaline batteries will last more than one year.

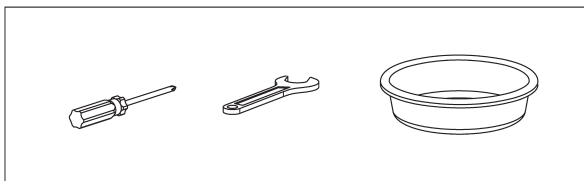
System Parameters

Control time	< 0.3 s	Power supply	4 AA batteries
Auto Switching off time	180s	Standby power consumption	<0.1mA
Waterproof level	IPX5	Water temperature	0 °C -75 °C
Resistance level	16bar	Minimum water pressure	0.7bar

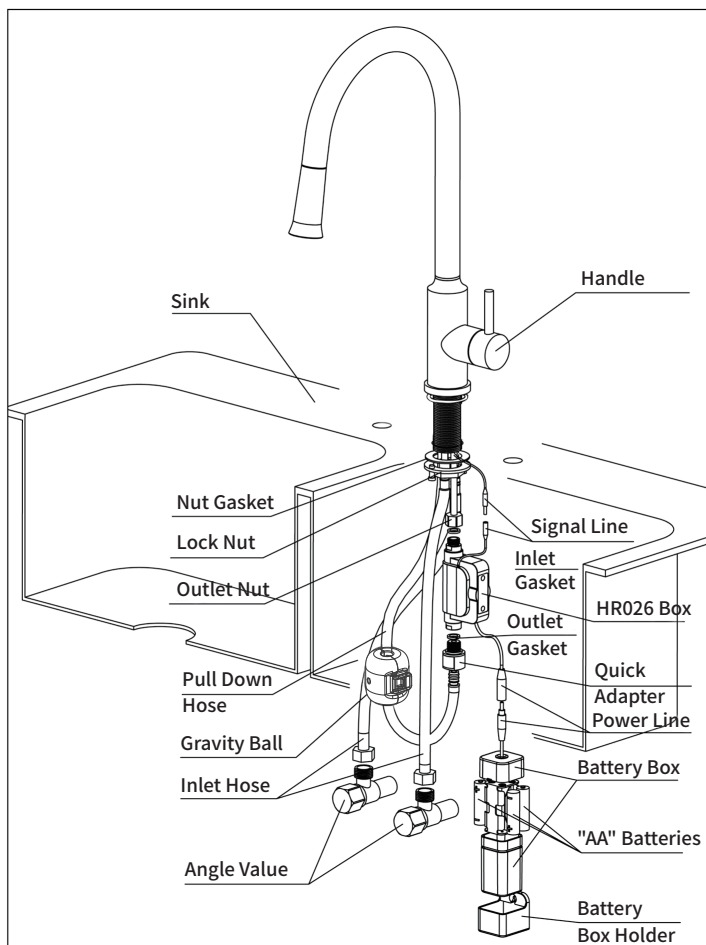
Operation Methods

Touch the faucet to activate the flow, and touch again to deactivate. The touch period should not exceed 300ms.

Tools are required:



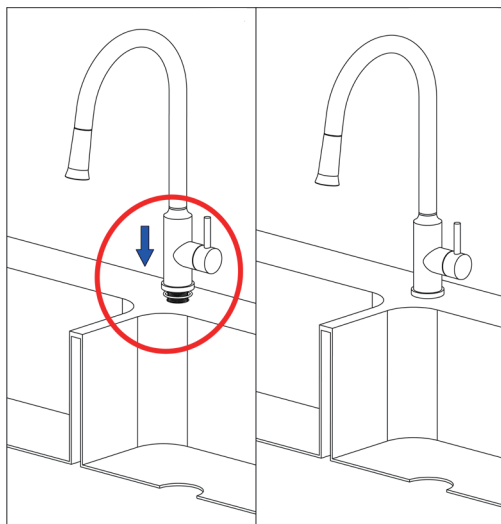
Installation Schematic Diagram



Installation Steps

A

Step 1: Install and fix the faucet.

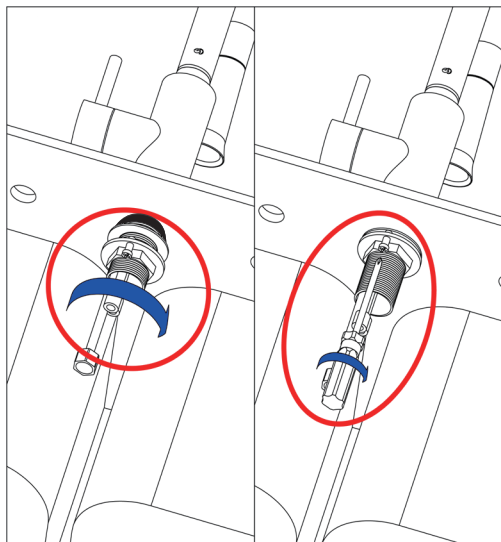
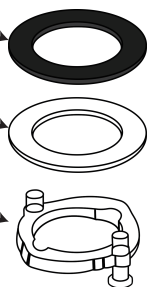
**B**

Step 2: Tighten with screwdriver until secure.

rubber mat

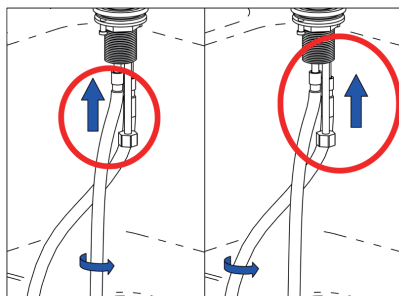
washer

lock nut



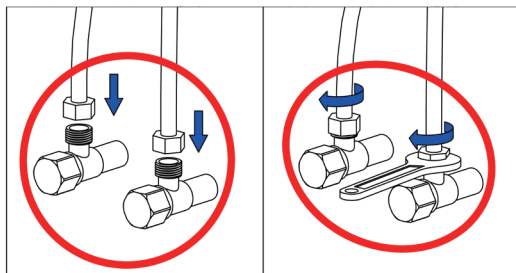
C

Step 3: Attach hot and cold inlet hose to the faucet and angle valves.



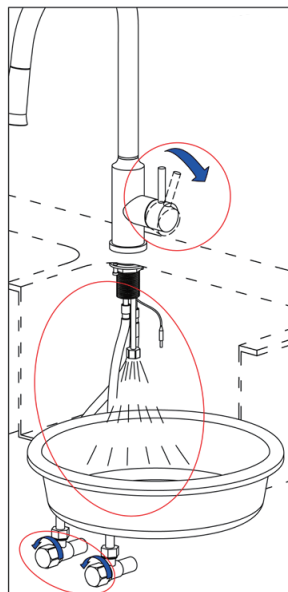
D

Step 4: Tighten with wrench until secure.



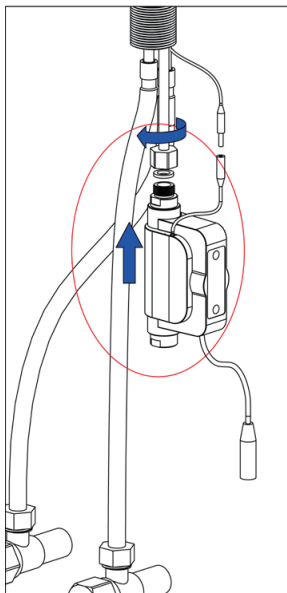
E

Step 5: Flush the supply lines.



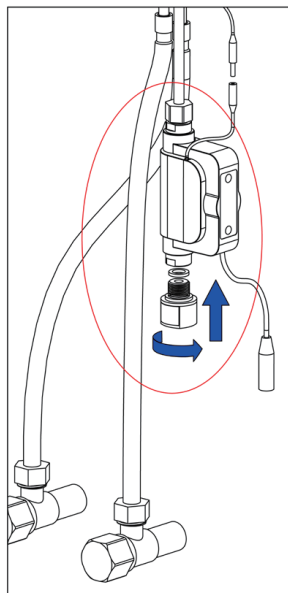
F

Step 6: Connect the HR028 BOX to the faucet.



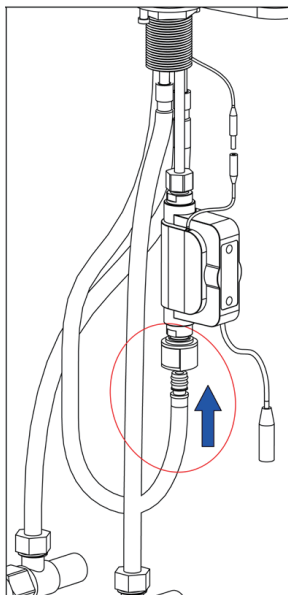
G

Step 7: Connect the Quick Adapter to the controller.



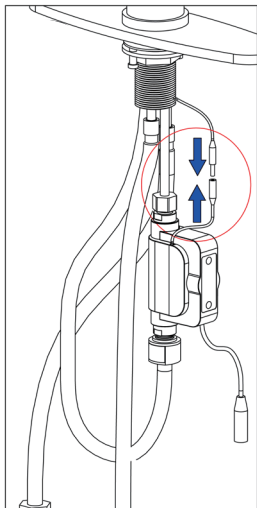
H

Step 8: Insert hose into the end of the Quick Adapter.



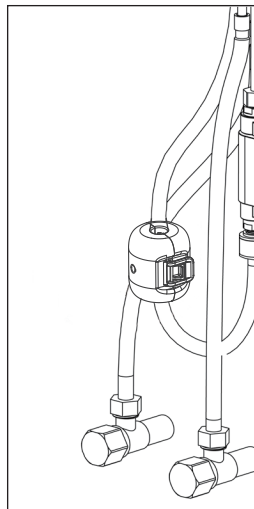
I

Step 9: Connect the signal line.



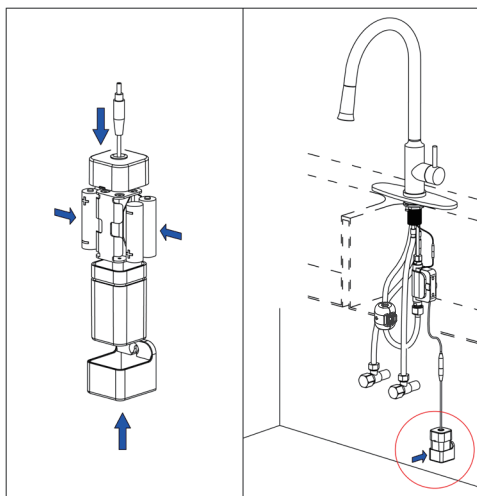
J

Step 10: Lock the gravity ball to the area marked by the yellow label on faucet hose.



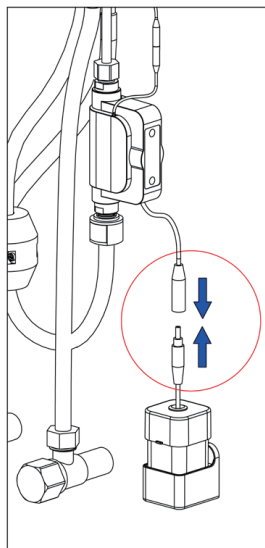
K

Step 11: Place batteries in battery adapter then secure the battery box. **ATTENTION:** The battery box should be placed against the wall or put onto the ground.



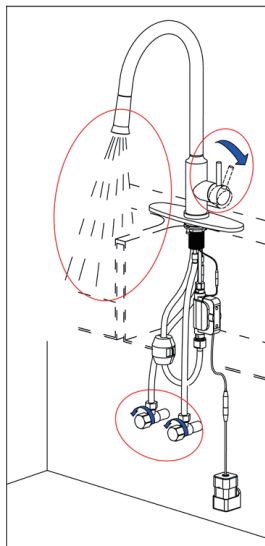
L

Step 12: Connect the power line.



M

Step 13: Open the angle valve and handle.



Cleaning & Maintenance

To keep the faucet clean and shiny, please clean it regularly:

1. Rinse with pure water and dry the faucet with a soft cloth.
2. Do not use detergents, nylon brooms, emery cloth, sandpaper, or coarse particles such as decontamination or polishing powder.
3. Never use any acidic detergent, rough detergent, or soap.
4. After using the product for a period of time, the water flow may diminish and become scattered. If this issue occurs, remove and clean the aerator, then reattach it.
5. When the ambient temperature is less than 0 degrees Celsius, please take measures to protect appliances such as water nozzles.
6. When not in use, please close the main inlet valve to prevent unnecessary loss.

Maintenance Instructions

1. Use clean water and soft cloth to eliminate surface dirt and scale film as much as possible.
2. Use one of the following cleaning agents to remove surface dirt and scale film,
 - a. mild liquid detergent
 - b. A colorless glass cleaner and a powdered, completely soluble detergent with no grinding effects
 - c. A polishing solution that does not contain abrasive elements.
3. After the cleaning is completed, wash away all traces of the cleaning agent with water, then immediately wipe with a soft cotton cloth.
4. Use cloth to wipe the faucet with engine oil or car wax.

Thank you for reading!

If you encounter any issues when installing Yitahome's Kitchen Faucet, e-mail us at after-sale.cs@hotmail.com.



Pure & Easy