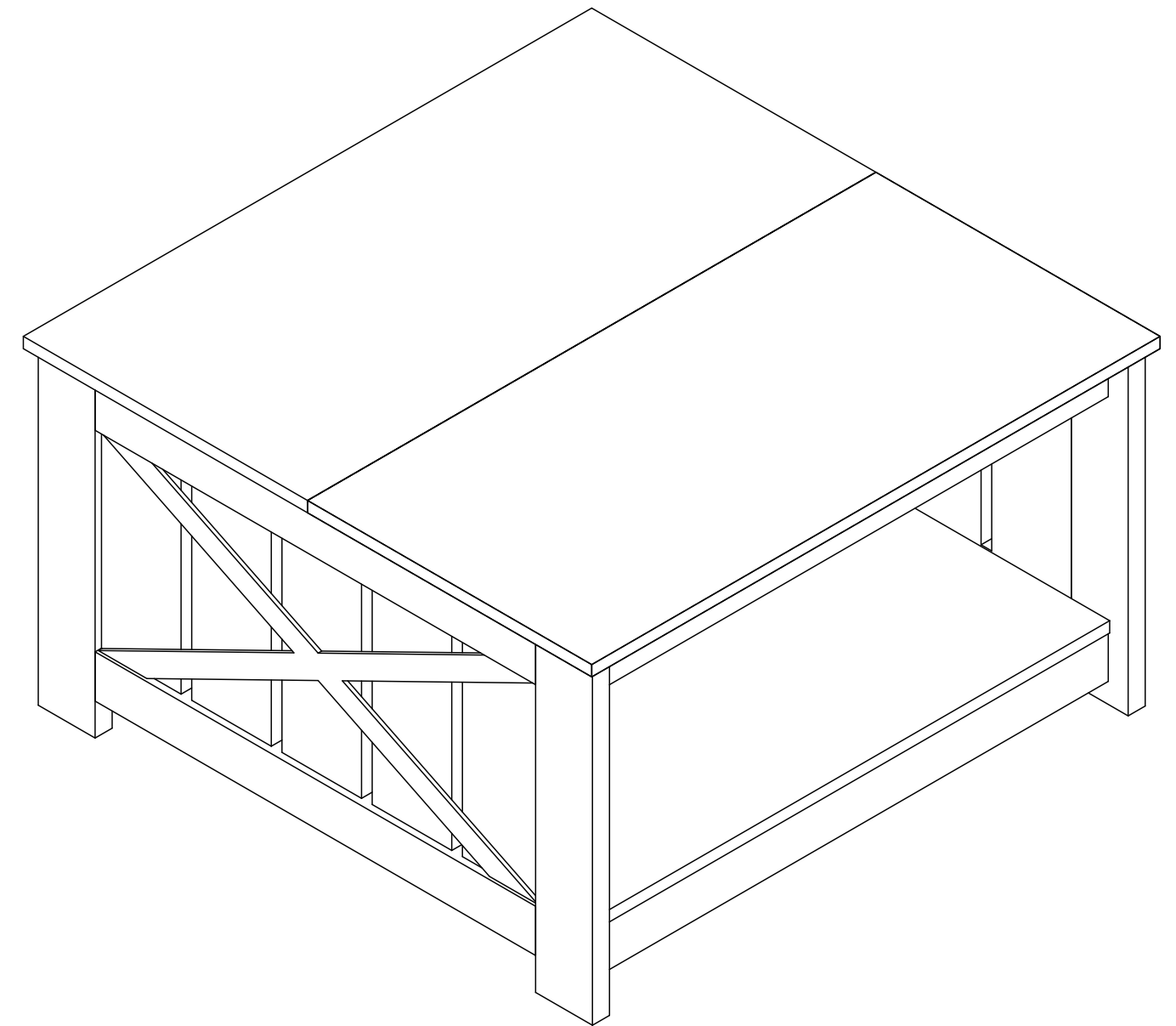


HZHCJJ-V1

FTLFCT-0021

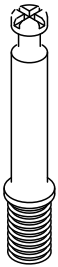

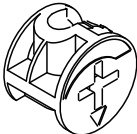
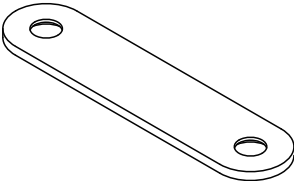
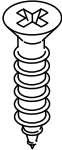
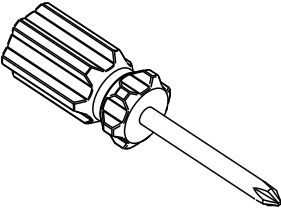
**COFFEE TABLE****CONTACT US:**

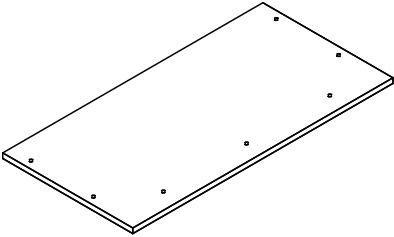
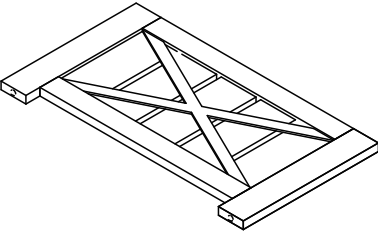
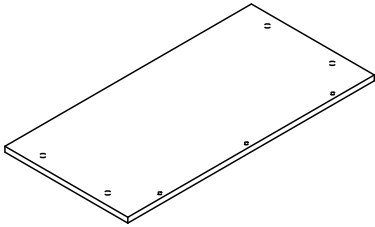
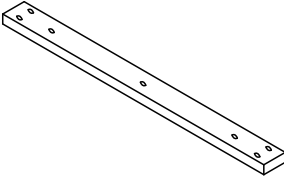
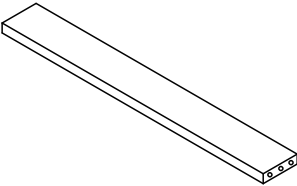
If you have any questions about the installation of YITAHOME® products, just contact us at +1(888)717-8084 from Mon-Fri 8:00 AM-16:30 PM PST / Sat. 8:00 AM-12:00 PM PST or E-mail us at: after-sale.cs@hotmail.com

Alternative method to contact us(amazon.com orders only)

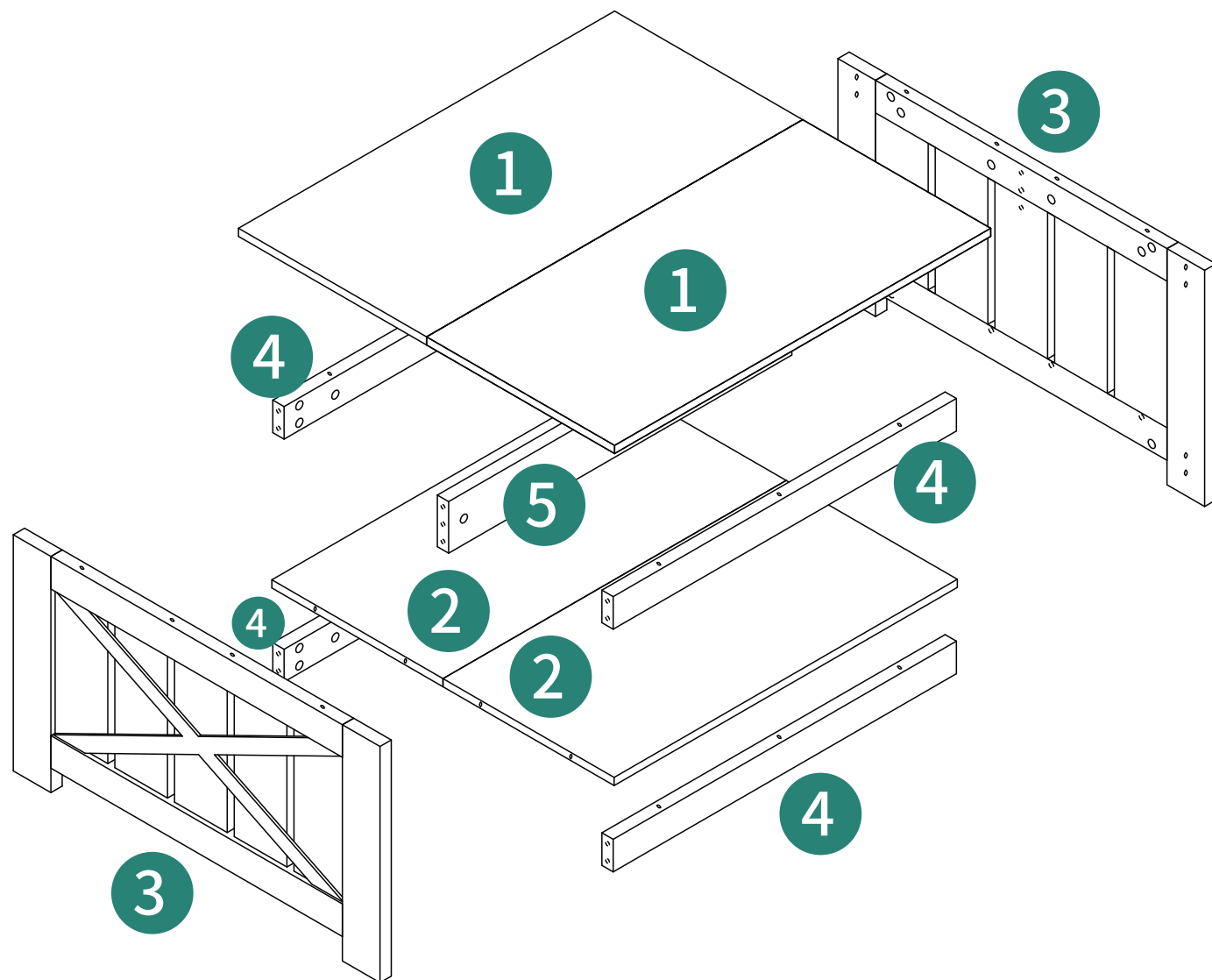
- 1.Log into your amazon account
- 2.Go to "Your Orders" and find the purchase
- 3.Click on "Contact Seller"

- Notice:
- 1. Follow the installation instructions. Please confirm all accessories are preset before i
nstallation.
 - 2. Do not fully tighten the screws during initial assembly.Fully tighten screws only once all
pieces which are correctly assembled.
 - 3. If you encounter any problems during installation, refer to two solutions: Follow the
installation video tutorial on the Amazon product page or contact our customer service.

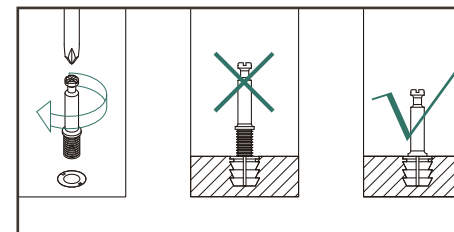
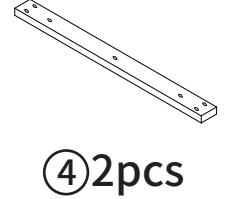
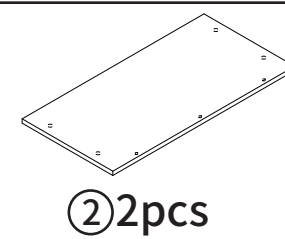
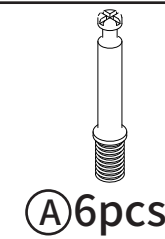
Item no.	Reference Image	Qty.	Item no.	Reference Image	Qty.
A	 M6×12	X46	D	 M6×12	X4
B		X46	E		X2
C	 M4×14	X4			X1

Item no.	Reference Image	Qty.	Item no.	Reference Image	Qty.
1		X2	3		X2
2		X2	4		X4
			5		X1

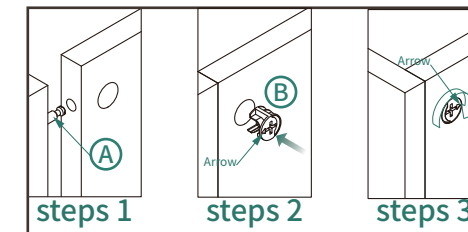
Explosion Diagram



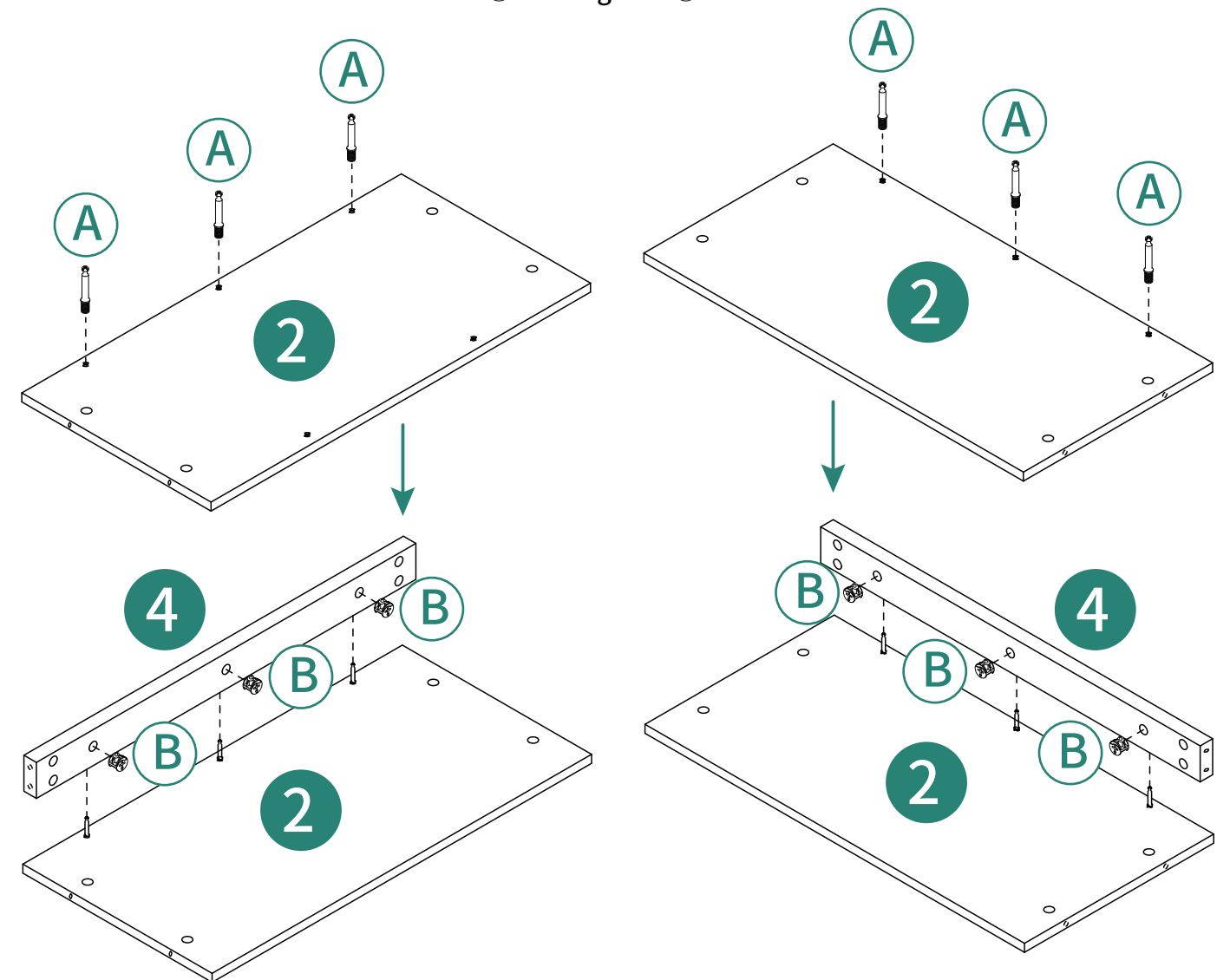
1



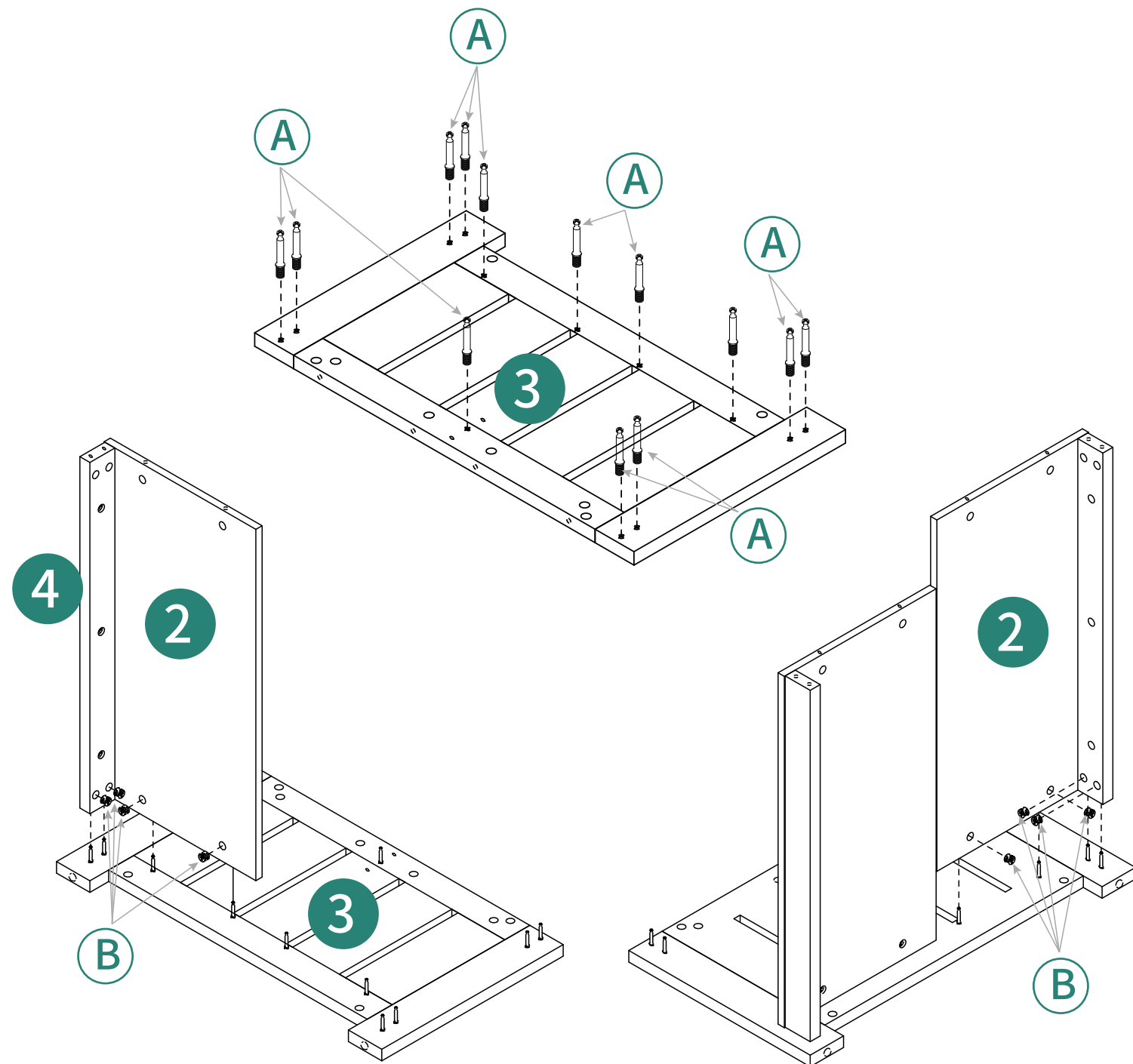
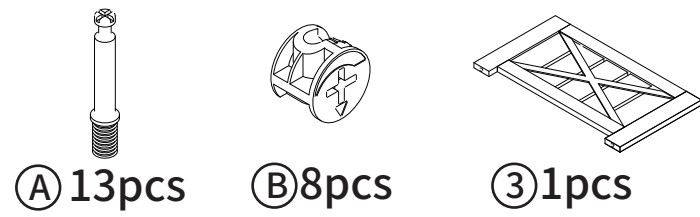
Tighten Ⓐ clockwise until all of their threads are engaged.



The two boards fit vertically, place Ⓑ and match their holes with Ⓐ then tighten Ⓑ clockwise.

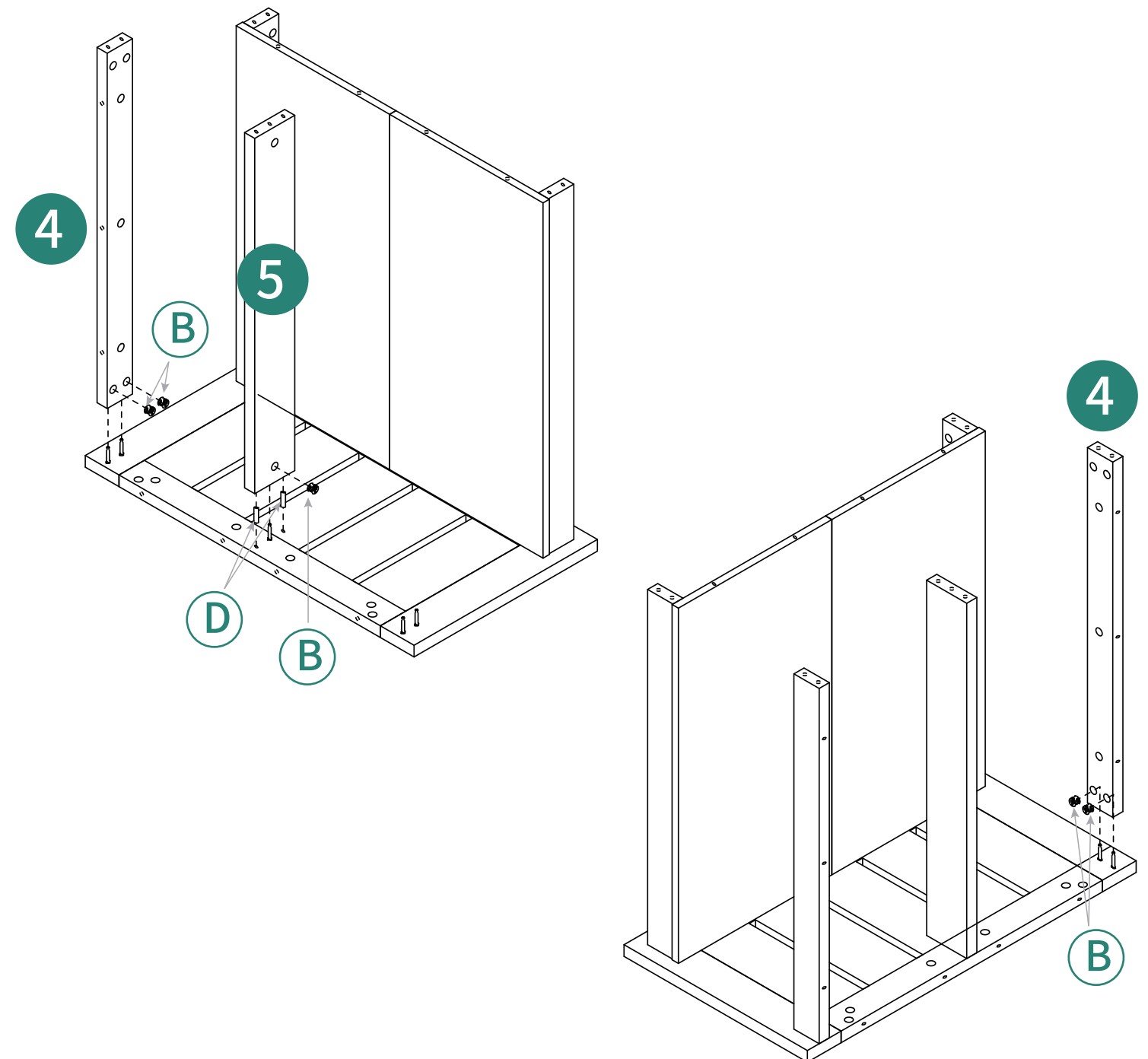
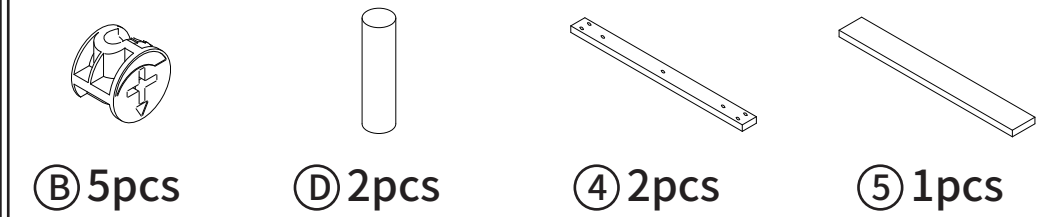


2



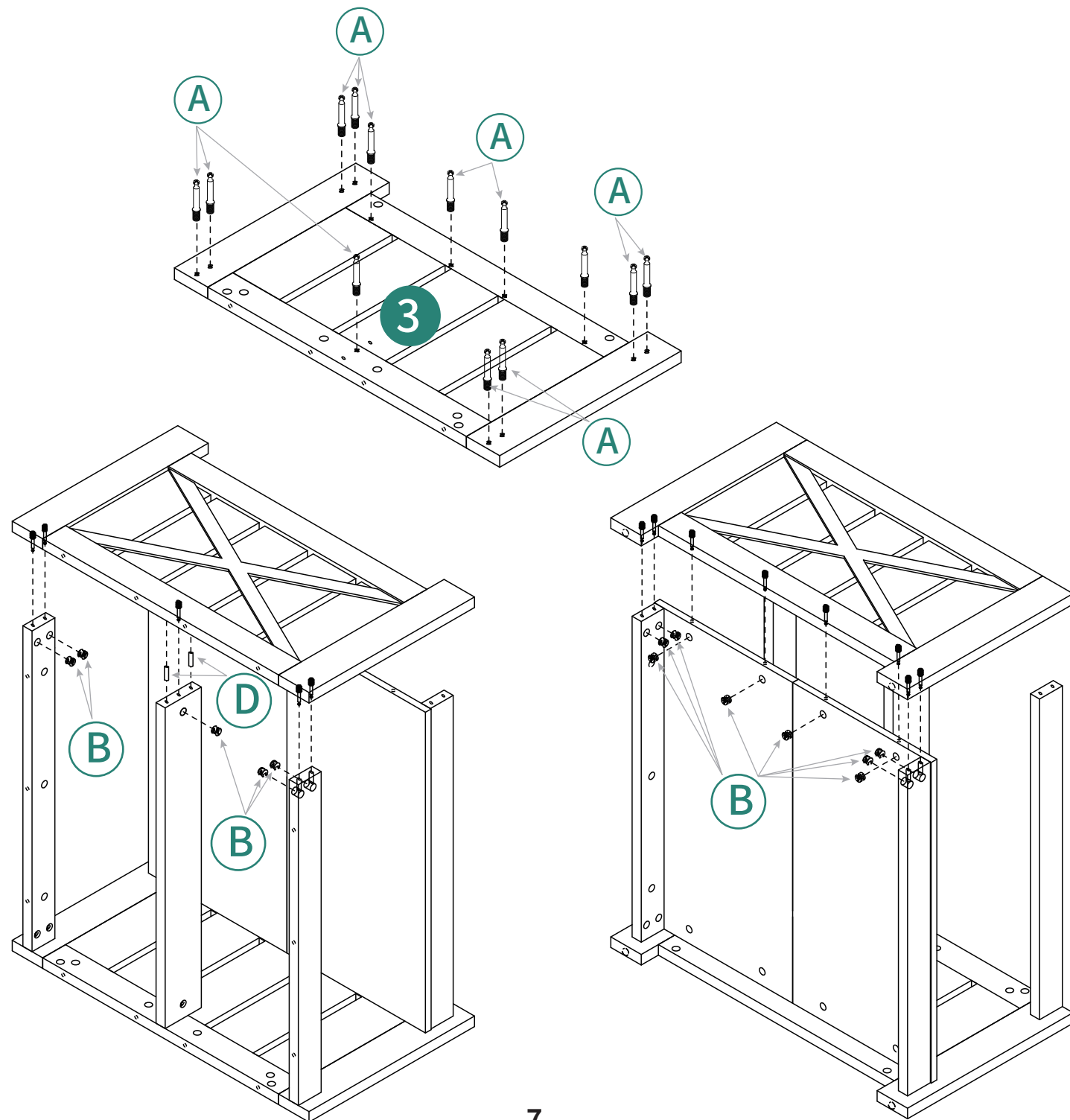
5

3



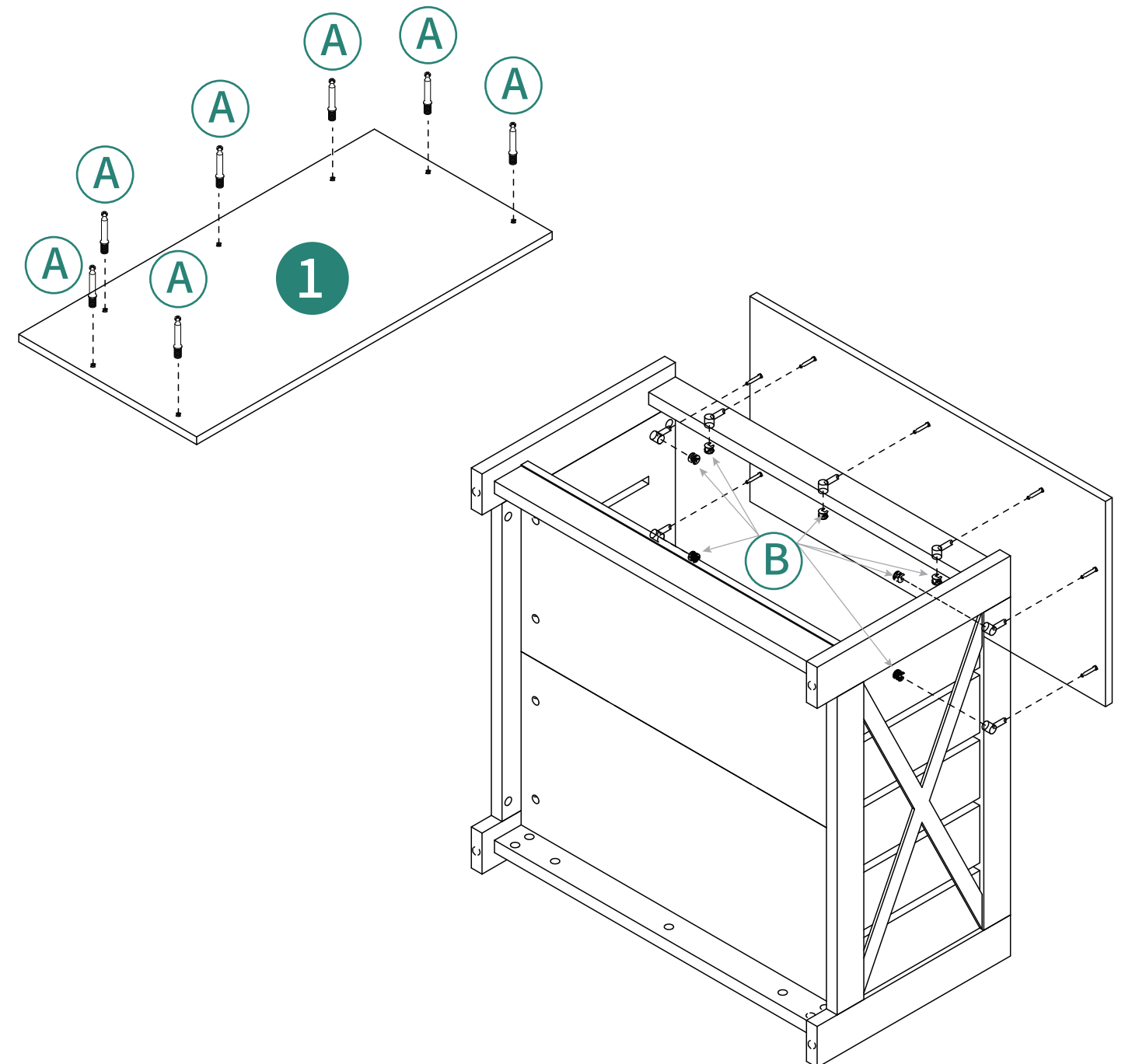
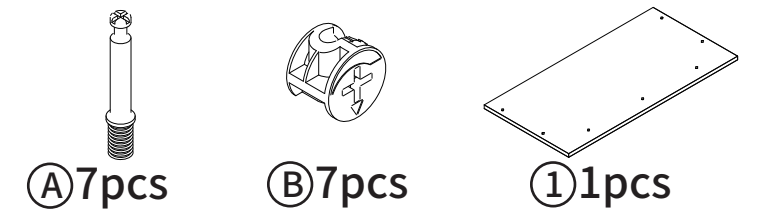
6

4

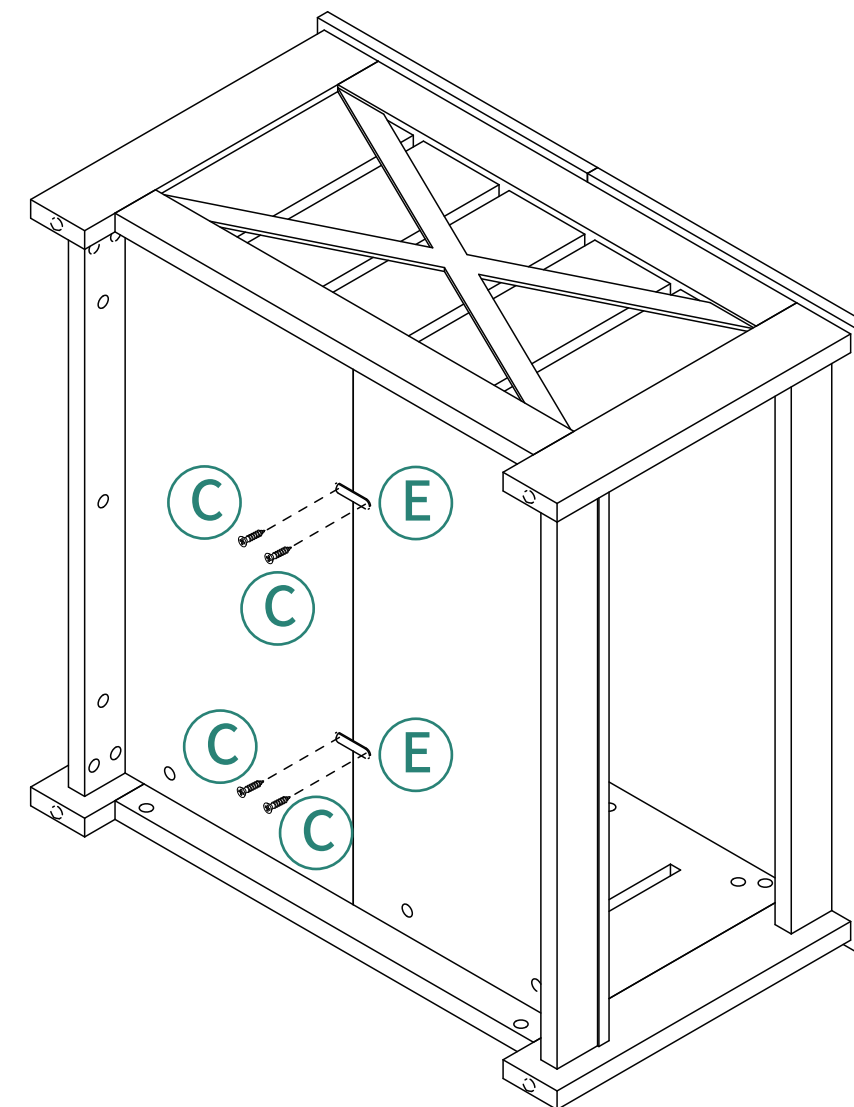
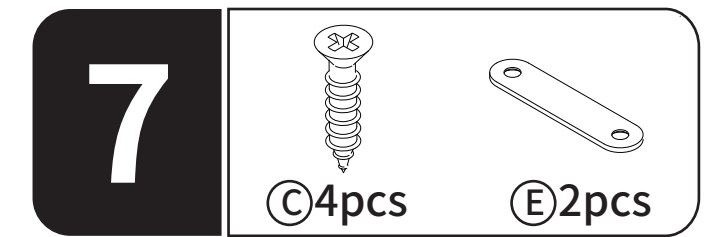
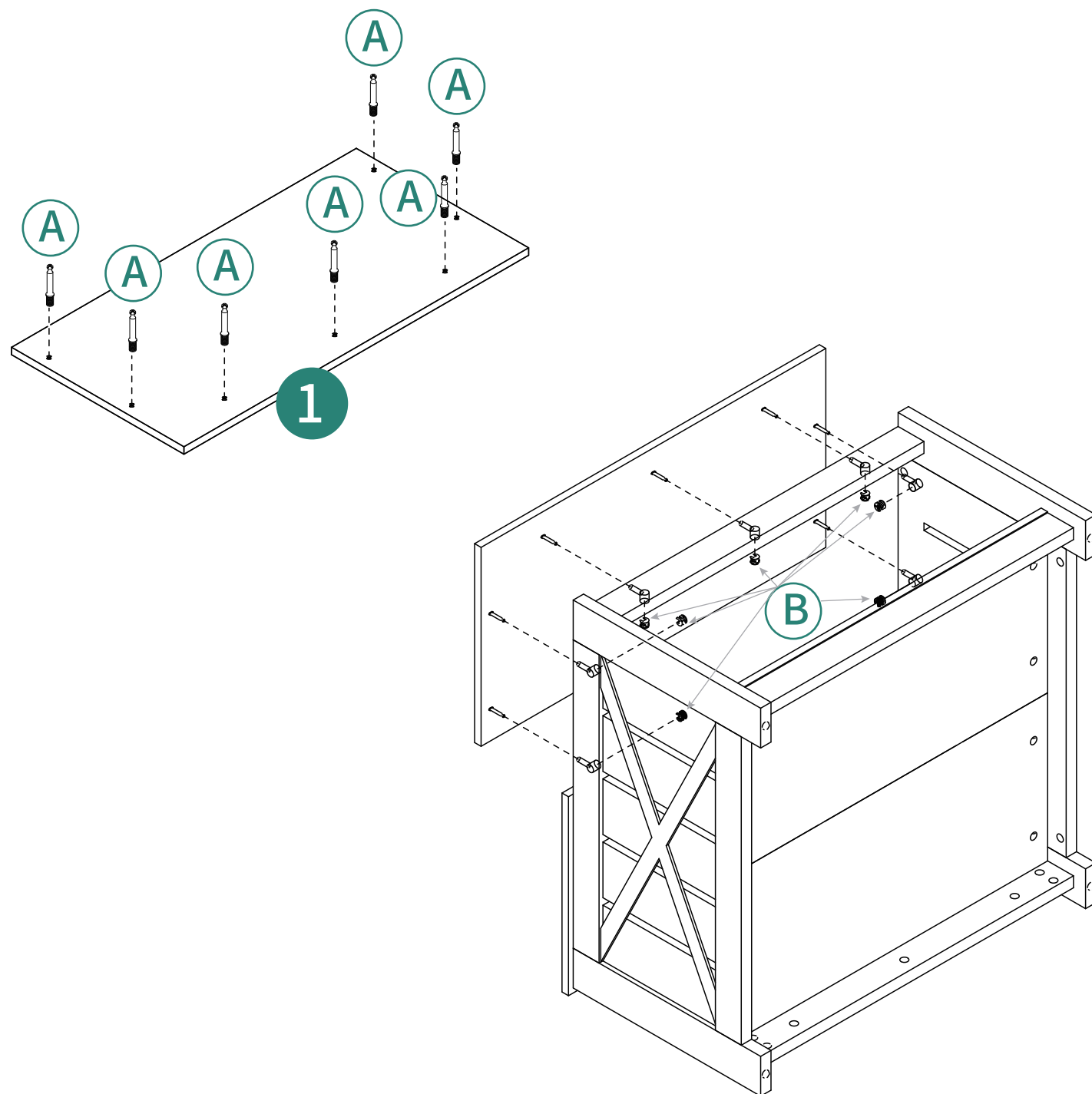
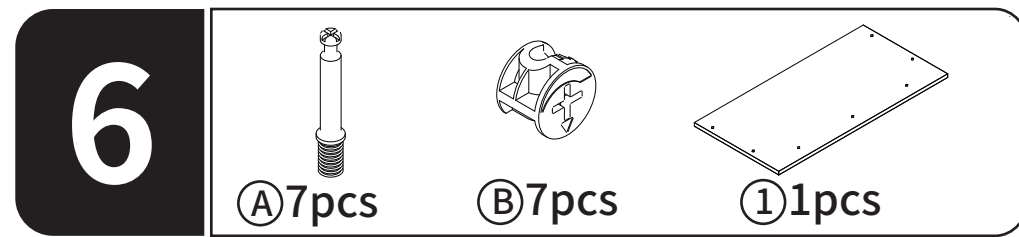


7

5



8



Installation Completed